

# Land Matters

A NEWSLETTER FOR SUPPORTERS OF THE AQUIDNECK LAND TRUST

DECEMBER 2011

## In This Issue:

Saint Mary's Land Conservation Effort *Page 1*

ALT's Watershed Study *Page 3*

Dey Conservation Transaction *Page 4*

Rovensky Park Conserved *Page 5*

Pennfield School Collaboration *Page 5*

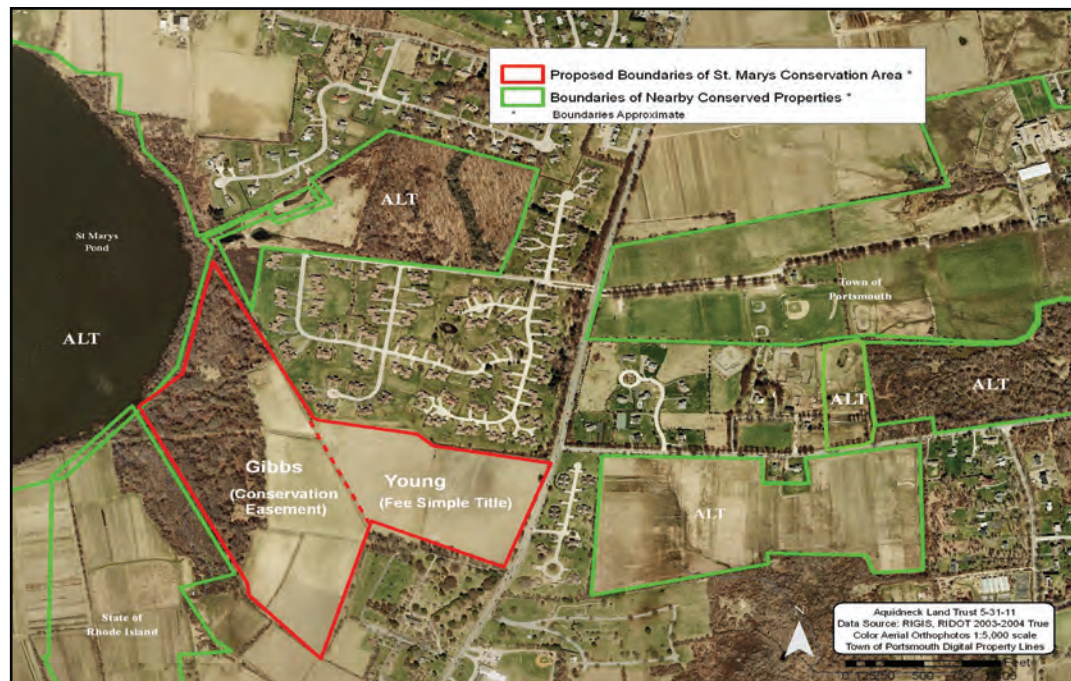
Ocean View Conserved *Page 6*

Wicks Closing *Page 7*

Strategic Property Added to Sakonnet Greenway *Page 8*

Welcome New Stewardship Director *Page 8*

2011 Event Recaps *Pages 9-11*



## The Campaign to Save the Saint Mary's Church Land Continues to Move Forward

On May 25, 2011, ALT, St. Mary's Church Portsmouth and the Trustees of the Sarah Gibbs Trust signed an Option Agreement that gives ALT until May 24, 2013 to raise over \$3 million to conserve about 70 critical open space acres of the St. Mary's Church land between East Main Road and the St. Mary's Pond Reservoir in Portsmouth. To date, we have raised a little over \$2.6 million from 3 governmental entities, 3 foundations and 21 individuals.

The proposed approximate 70-acre St. Mary's Church conservation area is strategic from a conservation perspective. Pursuant to the Town of Portsmouth's 2002 Local Recreation, Conservation and Open Space Plan, the subject land is located within a Town of Portsmouth designated Open Space and Active Agriculture Area, Resource Protection Overlay District Area and Greenways Plan Area. The St. Mary's Church land is located next to a number of previously conserved parcels within ALT's Center Island Greenway thereby building upon and enhancing this past conservation work.

The land also falls within the St. Mary's Pond Watershed, directly abutting the St. Mary's Pond Reservoir area with over 1,000 ft. of frontage on the reservoir property. The St. Mary's Church land therefore acts as a natural buffer protecting this important island water reservoir from harmful runoff. The 2000 study *Critical Parcel Identification for Watershed Protection in Newport County, Rhode Island*,

*continued on page 2*

## SAVE THE DATE!

February 2, 2012

6pm-8pm

**Annual Meeting,**  
Atlantic Beach Club  
RSVP to [chuth@ait.org](mailto:chuth@ait.org)

July 28, 2012

**Fiesta Verde**

November 3, 2012

**Race for Open Space,**  
Sakonnet Greenway Trail

## Saint Mary's *continued from page 1*

done by the Aquidneck Island Partnership, recognized the subject St. Mary's land as critical to protect from a watershed protection perspective. ALT's recently completed year-long mapping and prioritization study of all the remaining and threatened open space parcels within Aquidneck Island's seven primary watersheds also identified the St. Mary's Church land as a high priority for protection.



The woods, fields and wetlands of the land provide diverse wildlife habitats that support various listed species such as the Glossy Ibis. This land, which has almost 1,000 ft. of frontage on East Main Road, is also a priceless and iconic property that provides joy to numerous passersby everyday with its spectacular scenic vistas. Furthermore, the fields of the proposed conservation area consist of mostly Prime Farmland Soils as recognized by the United States Department of Agriculture making the property an important agricultural resource.

To help us complete the fundraising for the Campaign to Save the Saint Mary's Church Land, please contact Executive Director Ted Clement at [tclement@ailt.org](mailto:tclement@ailt.org) or 401-849-2799.

## ALT Remembers Andy Arkway



Andy Beryl Arkway, Newport, RI, born May 26, 1960, Stamford, CT, passed away on July 8, 2011 in Boston, MA, after a lengthy illness. The son of Charlene Shayne, deceased, Boston, MA, and Richard Beryl Arkway, New York, NY, Andy, of Newport, RI, was a long-time Rhode Island resident, living formerly in Providence and Scituate.

With Andy's passing, Aquidneck Island and ALT lost a good friend and steward. Andy served as ALT's Stewardship Director from 2005 through 2010. ALT will be erecting an engraved stone bench on the Sakonnet Greenway Trail to honor this outstanding person, whom we miss dearly.

# Aquidneck Land Trust

*Preserving the Island's open spaces and natural character for the lasting benefit of the community.*

## BOARD OF TRUSTEES

William J. Corcoran, Esq., *Chair*  
Linda L. Ujifusa, Esq., *Vice Chair*  
Richard E. Bauchspies, Jr., CFA, *Treasurer*  
Jameson Chace, Ph.D. *Secretary*  
Charles B. Allott, Esq.  
Patricia Bilden  
Mary Bush-Brown  
Robert A. Carrellas, M.D.  
Louis Escobar  
Kim Fleming  
Katherine Gagliano  
Mark D. Hellendrung  
Nannette Herrick  
Kim Herrlinger  
Holly Janney, Esq.  
Chandler Lyell  
Paul Nunes  
Bettie Pardee  
Annie Sherman  
George Thurston  
Jane M. Timken, Ph.D.

## BOARD OF ADVISORS

Michele Foster, *Chair*  
Randall Arendt  
Hugh D. Auchincloss III  
Lyn Comfort  
Ann Conner  
Steven Cotta  
Trudy Coxe  
Anne S. Damon  
Stephen DeLeo, Esq.  
Ronald F. Dick  
Ronald Lee Fleming  
Anne W. Garnett  
Stephen A. Haire, Esq.  
George Gardner Herrick  
Samuel H. Howell  
Katherine E. Irving  
Matthew O. Kirby  
Mil Kinsella  
Sanne Kure-Jensen  
Lisa Lewis  
David E. P. Lindh  
Richard C. Loebis, Jr.  
Stephen J. MacGillivray, Esq.  
John K. McColloch  
Deborah L. Merritt  
Nuala Pell  
Denise L. Roberts, CFP  
Jocelyn C. Sherman  
Larry Taft  
Alison S. Vareika  
Robert E. Victor, CPA  
Sandra Whitehouse, Ph.D.

## STAFF

Edward S. Clement, Jr., Esq., *Executive Director*  
David Thalmann, *Director of Finance & Administration*  
Sophia DeMaio, *Stewardship Director*  
Jessica Pohl, *Development Director*  
Courtney Huth, *Assistant Development Director*  
Diana Britton, *Office Manager*

# ALT Completes Year-Long Watershed Study

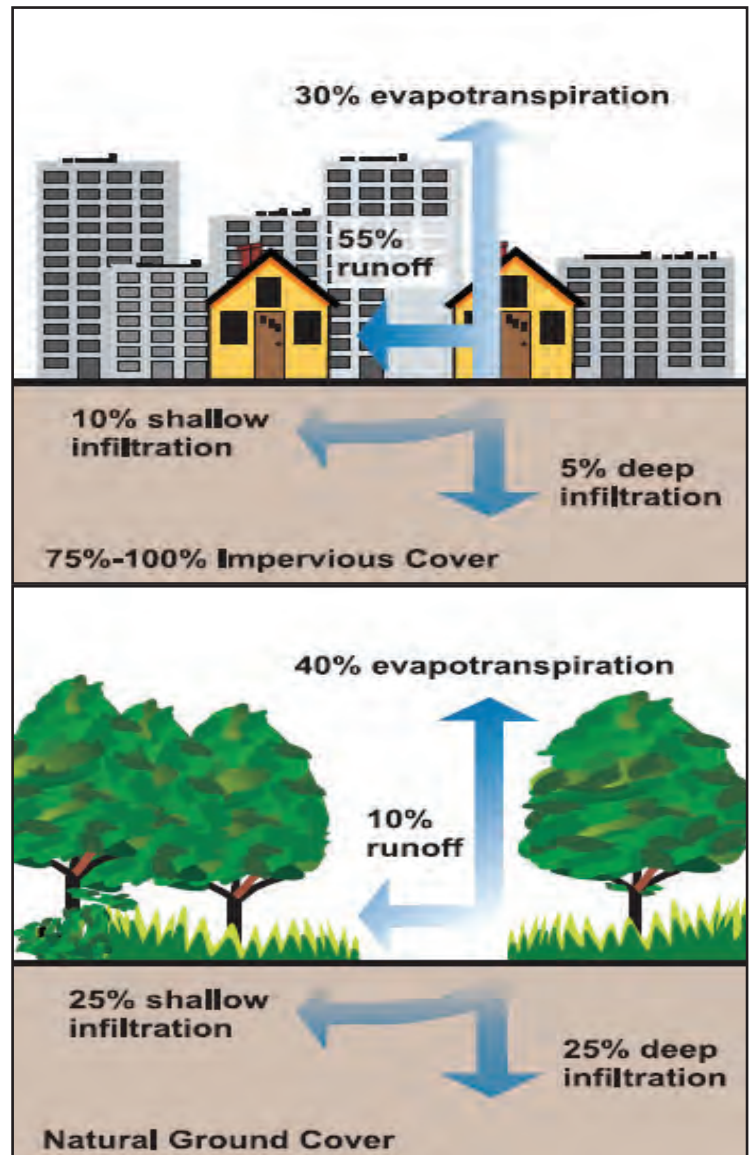
*Saving Watersheds Saves Money and the Environment*

With assistance from Salve Regina University and Roger Williams University, ALT recently completed a year-long mapping and prioritization study of all the remaining and threatened open space parcels within Aquidneck Island's seven primary watersheds.

A **watershed**, as defined by the United States Environmental Protection Agency ("EPA"), is *an area of land where all of the water that is under it or drains off of it goes into the same place*. Aquidneck Island's seven main watersheds are the Lawton Valley Reservoir, St. Mary's Pond, Sisson Pond, Bailey's Brook, Nelson Pond, Gardiner Pond, and Maidford River Watersheds. These watersheds support the Newport Water Department's seven surface water reservoirs on the island. The Newport Water Department also maintains a surface water reservoir in Tiverton, known as Nonquit Pond, and one in Little Compton, known as Watson Reservoir. Together, these nine surface water reservoirs supply water to most of Aquidneck Island's residents and visitors.

Developed areas affect water quality and quantity. In developed areas, much of the land surface is covered by buildings and pavement which can prevent rain and snowmelt from soaking into the ground. Most urban and suburban areas rely on storm drains to carry large amounts of runoff from roofs and paved areas to nearby waterways. The stormwater runoff carries pollutants, such as oil, dirt, chemicals and lawn fertilizers, directly to rivers, reservoirs and coastal areas which harms water quality. To see the relationship between ground cover and surface runoff, see the EPA diagram to the right of this page.

Laura Gabanski, Senior EPA Biologist and Healthy Watersheds Initiative Leader, states, "The cost of protecting watersheds is much less than the cost of restoring impaired waters. Choosing to protect ecologically valuable systems will save money in the long run." Aquidneck Island has been learning this lesson. For example, in Bailey's Brook Watershed, the island's most heavily developed watershed, an expensive ultra violet stormwater treatment plant was built near Easton's Beach, in addition to the pursuit of other proposals such as a costly offshore stormwater discharge pipe, due to polluted water, contaminated stormwater runoff and the resulting beach closures and other problems.



During the course of the study, ALT identified almost 300 open space parcels, representing over 3,000 acres, at risk of development within Aquidneck Island's seven primary watersheds.

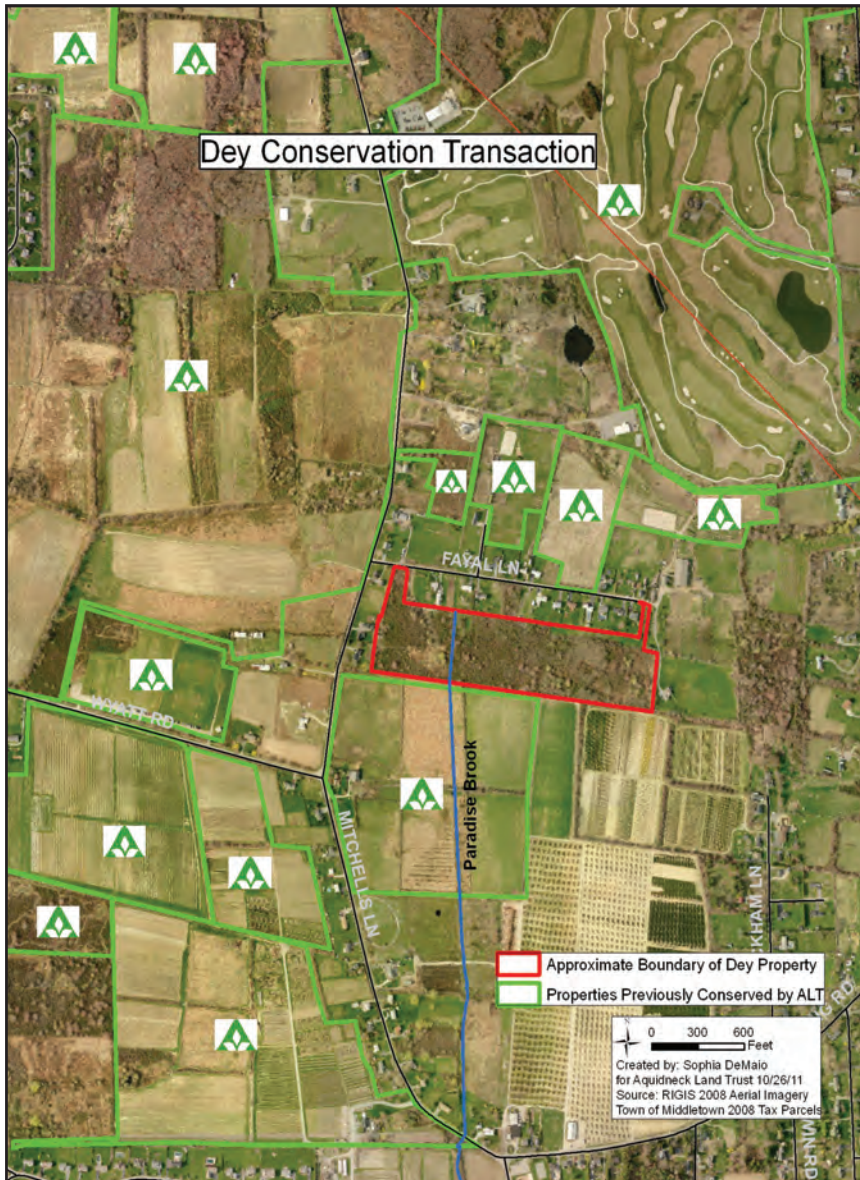
Next, ALT prioritized these properties from a watershed protection perspective using 6 scoring criteria:

1. Parcel an important buffer as is contiguous with a Critical Water Source
2. Parcel at least partially within subject watershed and within 200' of a Critical Water Source
3. Parcel an important buffer as is contiguous with a tributary of a Critical Water Source
4. Parcel contains at least 3 acres of forested area
5. Parcel contains at least 3 acres of wetland
6. Parcel contains 10 or more acres of undeveloped

*continued on page 6*

## Critical Watershed Property Conserved

This November, ALT acquired a perpetual Conservation Easement from Philip S. Dey on an 18.83-acre wooded property located around the headwaters of Paradise Brook off Fayal Lane in Middletown, Rhode Island.



The Dey land, located in the Nelson Pond Watershed, was identified as critical for watershed protection purposes in a year-long mapping and prioritization study of all the remaining and threatened open space parcels within Aquidneck Island's seven primary watersheds. This study was completed by ALT earlier this year. The Dey land was also identified as a priority area to conserve for watershed protection purposes in the 2000 study *Critical Parcel Identification for Watershed Protection in Newport County, Rhode Island* by the Aquidneck Island Partnership.

A local engineering firm demonstrated that the Dey land, zoned for 40,000 sq. ft. residential lots, could likely be developed into 10 or more residential lots. With the closing on the Dey Conservation Easement, the parties extinguished all of those development rights except for a one-acre Building Envelope that Mr. Dey reserved for residential and agricultural buildings. Said Building Envelope can be located anywhere on the property outside of the Habitat and Paradise Brook Buffer Area established by the Conservation Easement, a 250' wide area around Paradise Brook on the Dey land.

Besides its water resource values, the Dey land has a number of other conservation values. The Dey property is strategically

located next to a number of other ALT conserved parcels within the Sakonnet Greenway thereby building upon and enhancing this past conservation work. This parcel contains United States Department of Agriculture recognized Prime Farmland Soils and Additional Farmland of Statewide Importance Soils and can thus serve as an important addition to the agricultural activities of the area. Under the Dey Conservation Easement, agricultural activities are allowed outside of the aforementioned Habitat and Paradise Brook Buffer Area. Furthermore, the property affords scenic vistas to the residents of Fayal Lane and passersby on nearby public roadways such as Mitchells Lane and Fayal Lane. This land also has wildlife habitat values.

Philip Dey stated, "I grew up in North Brunswick, New Jersey in the early 1950s and 60s. I saw first-hand how uncontrolled development destroyed beautiful farms and natural vistas. My children, Noah and Avery, and I wanted to honor my parents, Philip S. Dey and Mary Gray Avery Dey, and their values while also protecting some of the crucial fabric of our community. It was truly rewarding to be part of something that will benefit current and future generations. Working with the Aquidneck Land Trust was a true pleasure..."

## Preservation Society Grants Conservation Easement to ALT

The Preservation Society of Newport County, Rhode Island is a non-profit organization accredited by the American Association of Museums and dedicated to preserving and interpreting the area's historic architecture, landscapes and decorative arts. Its 11 historic properties—seven of them National Historic Landmarks—span more than 250 years of American architectural and social development. In February, the Preservation Society of Newport County granted ALT a Conservation Easement on Rovensky Park on Bellevue Avenue in Newport, ensuring that the park will continue to be maintained as a passive and scenic park in perpetuity. Preservation Society CEO & Executive Director Trudy Coxe said of the project, "We want to do everything we can to protect the historic viewsheds and landscapes of Aquidneck Island, and I can think of no better partner in that endeavor than the Aquidneck Land Trust."

The Conservation Easement will maintain the park as a non-commercial, passive, pastoral park, legally prohibiting any subdivision, siting of recreational buildings, permanent billboards or parking lots, unnecessary planting or cutting of trees and plants, dumping, and general use of motorized vehicles.



## ALT and Pennfield School Form a Unique Partnership

On April 22nd, Earth Day, ALT and the Pennfield School signed a Conservation Collaboration Agreement and participated in a joint Earth Day cleanup in the Sakonnet Greenway on the eastern side of Aquidneck Island.

Some of the key provisions of the Agreement follow:

1. Pennfield's student body became members of ALT under its Young Friends Membership Program;
2. ALT and Pennfield will collaborate on the continued use and development of natural science lesson plans ALT developed for its Sakonnet Greenway Trail;
3. Pennfield will volunteer in ALT's annual monitoring program for its Sakonnet Greenway Trail;
4. ALT will teach Pennfield students about land conservation; and
5. Pennfield will host one of ALT's environmental education events open to the Aquidneck Island community.



In an effort to expedite its time-sensitive land conservation work and connect with more people, ALT is reaching out to young people to join the cause, through its Young Friends Membership Program and other initiatives such as ALT's natural science lesson plans for the Sakonnet Greenway Trail, as young people have a major stake in what our future environment will be like. Hopefully other Aquidneck Island schools will join the cause.

## Ocean View Conserved

On Saturday, July 23rd, in front of a sell-out crowd at ALT's summer gala, Fiesta Verde, on the lawns of the Ocean View, Miramar and Rock Cliff estates in Newport, the Dick family, owners of Ocean View on Bellevue Avenue since the 1930s, donated a perpetual Conservation Easement to ALT on the open space portion of the estate next to the Cliff Walk and Easton Bay as part of ALT's Newport Conservation Initiative.

The Newport Conservation Initiative has been very successful. Since its launch in 2009, ALT and its visionary partners have conserved the following properties in Newport: Braga Park; the Merrilton Estate off of Bellevue Avenue; the Sulthorne field near Salve Regina University; Spencer Park; King Park; Rovensky Park; and now Ocean View.

ALT's Newport Conservation Initiative is a two pronged conservation strategy. The urban parks part of this initiative is focused on conserving the important existing and inadequately protected parks in the City of Newport with perpetual Conservation Easements. This will be coupled with the creation and conservation of new parks in the City by turning strategic vacant lots into "pocket parks." The landscapes and estates part of this initiative is focused on conserving the important landscapes and scenic vistas in the City, especially in the Bellevue Avenue and Ocean Drive areas. Through this initiative, ALT and its partners hope to strategically limit the "development infilling" of the City and conserve the critical natural resources that distinguish Newport and directly contribute to the quality of life on Aquidneck Island.

The near 1-acre open space area conserved at Ocean View, part of a long green corridor, is contiguous with the Cliff Walk and provides a stunning scenic backdrop for the users of this world famous public trail. The conserved area of Ocean View and other nearby open spaces also provide a buffer, or green filter, strip along Easton Bay which helps protect this important water resource from harmful runoff.

"My family has had a long and enduring relationship with Aquidneck Island since the 1930s. The Aquidneck Land Trust is doing such a fine job protecting the island's green infrastructure and beauty which sustains us so we were very pleased to do our small part," said Ronnie Dick on behalf of the Dick family.



## Watershed Study *continued from page 3*

land.

A Critical Water Source was defined as Lawton Valley Reservoir, St. Mary's Pond, Sisson Pond, Nelson Pond, Gardiner Pond, North and South Easton Reservoirs, Bailey's Brook, Maidford River and Paradise Brook. Out of this scoring process, three tiers of parcels for watershed protection were created, with Tier 1 parcels being the most important lands with the highest scores. There were about 100 Tier 1 parcels identified, representing almost 2,000 acres.

To better understand the importance of a Tier 1 parcel for watershed protection, it is helpful to look at an actual example. The St. Mary's Church land off of East Main Road in Portsmouth had a Tier 1 score. The land is contiguous with St. Mary's Pond and thus directly buffers and protects this important island water reservoir. The land also has over 3 acres of forest and wetlands. Furthermore, the property has well over 10 acres of undeveloped land.

## Campaign to Save Wicks Nursery a Success!

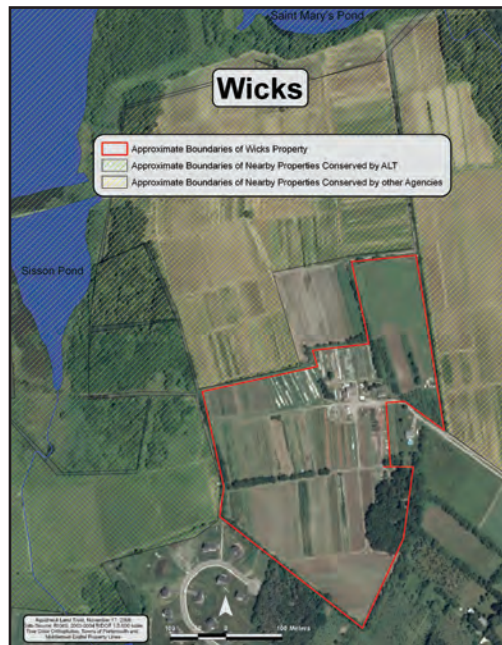
*Nearly 40 Acres of Prime Farmland Conserved in Portsmouth*

Wicks Nursery on Moitoza Lane in Portsmouth was under constant development threats the last few years, including a proposal in 2008 to convert the farm into an 108-lot subdivision that would have put immense pressures on Aquidneck Island's already burdened infrastructure and limited natural resources in the form of increased traffic and air quality degradation, public school demands, trash and waste disposal issues, storm water runoff problems, etc.

In July of 2010, ALT and the Wicks family announced that they reached agreement to provide ALT with an opportunity to save Wicks Nursery from development. The parties signed an Option Agreement, reached despite new development offers, that gave ALT nine months to raise the necessary monies to purchase a \$2 million perpetual Conservation Easement on almost 40 acres of the farm.

Wicks Nursery is very important and strategic from a conservation perspective. The property is contiguous with a number of other previously

conserved parcels within ALT's Center Island Greenway thereby building upon and enhancing this past conservation work. The parcel was also the last major undeveloped and unprotected property within the Sisson Pond



Watershed. This open space land provides a natural buffer that helps protect this important Aquidneck Island water reservoir from harmful runoff. The subject land has been actively farmed for generations

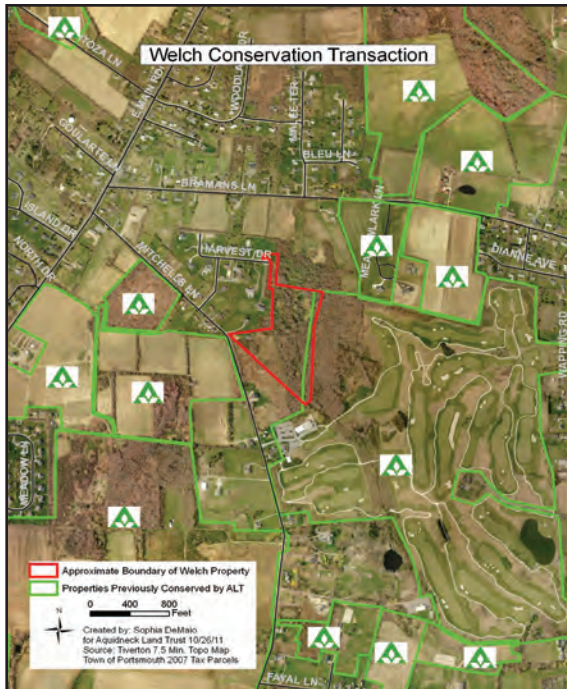
and is located next to other agricultural lands, many of which are conserved, thereby ensuring a critical mass of arable land in this area to sustain agricultural activities into the future. The property primarily contains Prime Farmland Soils as recognized by the United States Department of Agriculture.

Who would have believed that the six Wicks siblings, the federal government, the State of Rhode Island, a municipality, and a non-profit organization could have reached an agreement on a complex and time-sensitive real estate transaction, let alone almost anything else? Who would have believed that a small non-profit could have raised about \$2 million in less than a year for a project in this challenging economic climate? Well, on April 28th, 2011 ALT's Campaign to Save Wicks Nursery was successfully concluded with the acquisition of a \$2 million perpetual Conservation Easement on 37.59 +/- acres of Wicks Nursery. Numerous parties contributed to ALT's Campaign to Save Wicks Nursery including 3 governmental entities, 6 foundations, almost 90 individuals and 1 homeowners' association.

Richard Wicks, speaking on behalf of the Wicks family, noted, "My family has farmed and taken care of this beautiful land for almost 50 years. It is in our blood. However, due to the pressures and realities of the times, this land would have certainly been lost to development if it were not for the Aquidneck Land Trust stepping up to help at a critical time. We now have hope that we can keep farming the land we love."



# Strategic Property Conserved and Added to the Sakonnet Greenway



In November, ALT acquired a perpetual Conservation Easement from C. William Welch on a 14.25-acre horse farm and wooded property off Mitchell's Lane in Portsmouth, Rhode Island strategically located next to other conserved properties within ALT's Sakonnet Greenway on the eastern side of Aquidneck Island.

The Sakonnet Greenway runs from near Glen Road in Portsmouth south to Sachuest Point National Wildlife Refuge in Middletown. A Greenway is an area with a critical mass of nearby and connected open spaces which together afford a community substantial benefits such as wildlife habitat corridors, sweeping scenic vistas, recreational corridors that can support outdoor recreation opportunities such as ALT's Sakonnet Greenway Trail, long buffers for critical water supplies, and agricultural corridors. Fragmentation of agricultural land, caused primarily by development, is one of the significant threats to agricultural viability in New England. As shown on the map below, the Welch Farm is located next to a number of ALT conserved properties within the Sakonnet Greenway.

The Welch land has a number of conservation values. This parcel contains United States Department of Agriculture recognized Prime Farmland Soils and Additional Farmland of Statewide Importance Soils. Welch Farm utilizes approximately 3 acres for its horse operation. The rest of the land, designated as the Habitat and Little Creek Buffer Area per the Conservation Easement, has substantial water resource and wildlife habitat values. Little Creek flows through this portion of the property on its way to the Sakonnet River with the forested Habitat and Little Creek Buffer Area providing an important buffer and recharge area for this creek. The Habitat and Little Creek Buffer Area also contains vernal pools and a mature Red Maple-Black Gum Swamp that support a number of wildlife species. Furthermore, Welch Farm affords scenic vistas to the residents and passersby on Mitchell's Lane and Harvest Drive.

Mr. Welch stated, "For years, we have benefitted from the terrific conservation work of the Aquidneck Land Trust, especially their extensive bridle trails, so we felt it was time to do our part."

## Welcome Stewardship Director Sophia DeMaio

Sophia, who began her work at ALT in February, comes to us from Maine. She received her Bachelor of Science in Environmental Studies from Bates College and her Master of Science in Forestry from the University of Maine. Before joining the ALT staff, Sophia had worked as a Stewardship Coordinator for a collaborative of three land trusts in the Portland area and also as a Project Assistant for another land trust in Maine. In addition, she had done a number of other interesting things such as working as a Biological Science Technician for the National Park Service and traveling and working in Siberia.

There was robust interest in our Stewardship Director position and we received applications from many wonderful individuals.

Please join us in welcoming Sophia to the Aquidneck Island community!



# 9th Annual Golf Tournament a Festive and Fun Affair



After the great success of last year's golf tournament, co-chairs Kim Herrlinger and Nannette Herrick signed on again and created another spectacular day for ALT's 9th Annual Golf Tournament. Held on July 11 at the ALT-conserved Newport National Golf Club, this year's tournament welcomed nearly 100 golfers and ALT supporters to enjoy a day on the course and raised over \$30,000 for our time-sensitive mission. Last year's festive Mexican theme was repeated with a taco stand featuring quesadillas and margaritas for hungry golfers on the course and a delicious cocktail hour to end the festivities.



Matt Occhi took the cup this year and it will reside at PHS until next year's tournament.

The tournament's championship team, with the lowest net score, was the foursome of Jim Richardson, Sean McGrath, Dave Brunelle, and Todd McDonald. The winning ladies foursome was Nancy Brickley, Dani Luyten, Sharon Wood-Prince, and Sally Ohrstrom. Winners in the mixed category were Johna Chewning, Nancy Cushing, and John Finn. Individual awards went to Nannette Herrick for Ladies' Nearest to the Pin, Bob Pillsbury for Men's Nearest to the Pin, Kacy Fernandes for Ladies' Longest Drive, and David Ford Jr. for Men's Longest Drive. All participants took home a pair of Puma golf shoes.

For the third year running, ALT hosted the Aquidneck Land Trust High School Championship as part of our tournament, in which the top two golfers from Tiverton, Portsmouth, Middletown and Rogers High Schools played for a chance to win the High School Cup. Portsmouth High School's

Whether you're a serious golfer or just enjoy golfing for a good cause, be sure to stay tuned for details on our 10th Annual Golf Tournament to be held next summer.



**BEACH DOGS LACROSSE**  
[www.beachdogslax.com](http://www.beachdogslax.com)

## Sold-Out Crowd Celebrates a Memorable *Fiesta Verde*

July 23, 2011 saw a sold-out crowd of nearly 500 guests congregate on the adjoining lawns of Miramar, Ocean View, and Rock Cliff estates between Bellevue Avenue and the Cliff Walk to celebrate *Fiesta Verde: City by the Sea*. With the sea-foam green and sky blue color scheme adorning dining tables and reflected in the elegant lighting, the atmosphere was truly stunning.

Just before the call to dinner, guests were surprised with the announcement that the open space portion of the Dick family estate, Ocean View, would be perpetually conserved that very night. The parcel of land, which is next to Newport's historic Cliff Walk, was conserved as part of the Newport Conservation Initiative (for more on this project, see page 6).

Per tradition, this year's outstanding menu, by Russell Morin Fine Catering, focused on fresh, seasonal, locally-grown food and featured such delicacies as a raw bar, grilled Block Island swordfish brochettes, grilled peach salad, and charred sweet corn. As the spectacular sunset transitioned into a starlit evening, dramatic spotlights lit the remarkable coastline, reminding attendees why ALT's work is so important. Skyline Drive Orchestra trekked up from New Jersey to enthrall the crowd with their eclectic mix of dance music and popular hits, keeping the dance floor packed through the night.

This year saw the introduction of a new and exciting addition to *Fiesta Verde*: the *Very Verde Auction*. This special auction featured a variety of "green" items, from plant specimens and landscaping services to botanical paintings and nature-themed jewelry. The aim of this themed auction was to draw attention to our mission and highlight local businesses whose services tie in to this mission, while also fundraising for our urgent land conservation initiatives. Occupying its own tent filled with trees, floral arrangements, one-of-a-kind adventures, jewelry and other treasures, the *Very Verde Auction* was a huge success, raising nearly \$40,000.

Thanks to our gracious hosts David Ford and Pamela Fielder, Ronnie and Lilly Dick, Mat and Maisie Dick, and Sam and Ann Menco, Honorary Chairs Ronnie and Lilly Dick, Co-Chairs Bettie Pardee and Susan Ruf, and the many supporters who sponsored and attended the event, *Fiesta Verde: City by the Sea* raised over \$228,000 for ALT's time sensitive mission. Be sure to mark your calendars now for *Fiesta Verde 2012*, to be held July 28, 2012.



## The Aquidneck Island Paddle Race Day and Waterman Competition

### *Relay Teams Add a New Twist to Popular Event*

In past years, the Aquidneck Island Paddle has seen teams paddle clockwise around the 38-mile perimeter of Aquidneck Island. This year, paddle founders Matt and Kevin Kirby changed the event to an exciting new format: the Aquidneck Island Paddle Race Day & Waterman Competition. Instead of racing around the island, teams of four competed in relay races off the shore of the ALT/Norman Bird Sanctuary conserved portion of Third Beach, with three Stand-Up Paddleboard ("SUP") divisions and one Prone Paddleboard division.

Paddlers of all ages gathered on the beach to cheer on their teammates, making for an exciting and fast-paced morning. After the races, paddlers enjoyed a barbeque catered by the Preppy Pig and winners received prizes from Island Surf, Sport & Cycle.

This year's paddlers raised nearly \$6,000 to be split evenly between ALT, Lucy's Hearth, and the Norman Bird Sanctuary.



## The Race for Open Space on the Sakonnet Greenway Trail



This year's 5K Run/Walk saw 300 runners, walkers and families ready to conquer the Sakonnet Greenway Trail. After a moment of silence honoring ALT's outstanding former Stewardship Director, Andy Arkway, competitive runners set off while walkers, families with strollers and participants with dogs (leashed of course!) had a 15-minute delayed start. The race course began at the Glen in Portsmouth, traversed through fields, wooded areas and over boardwalks ending just before the Newport National Golf Club segment of the trail. Participants gathered at the finish to refuel with snacks and cider and

congratulate winners, and all children 14 and under received a commemorative Race for Open Space medal.

Overall race winners Brian Gumkowski, with a time of 19:29, and Liz Corvese, with a time of 21:50, received special recognition and prizes donated by Bridge to Fitness and Olympic Physical Therapy (a complete list of winners by age category can be found on ALT's website). All participants received an ALT cap to remember the day.

Thanks to co-chairs Mary Bush-Brown and Linda Ujifusa, a dedicated committee, our generous sponsors, supporters, volunteers, and race participants this year's race raised nearly \$11,000, exceeding our fundraising goal. Next year's race will be held on November 3, 2012 – we hope to see you there!



[www.aquidnecklandtrust.org](http://www.aquidnecklandtrust.org)

*Printed on recycled paper. You can help us prevent waste by passing this publication on to a friend, recycling it when you're through or letting us know if you would rather not receive it in the future. Thank you.*

## 2011 a Special Year for ALT

2011 was a special year for ALT. Just consider some of ALT's green accomplishments in 2011 that you, our supporters, helped us achieve for the benefit of current and future generations:

- Acquired a perpetual 4.95-acre Conservation Easement on **Rovensky Park** in Newport
- Acquired a perpetual 37.59-acre Conservation Easement on **Wicks Nursery** in Portsmouth
- Executed an Option Agreement with **Saint Mary's Church** and the Gibbs Trust that gave ALT 2 years to raise over \$3 million to save about 70 acres between the Saint Mary's Reservoir and East Main Road. To date, we have raised about \$2.6 million.
- Completed a year-long mapping and prioritization study of all the remaining and threatened open space parcels within Aquidneck Island's seven primary watersheds
- Acquired a perpetual .70-acre Conservation Easement on the **Ocean View Estate** next to the Cliff Walk
- Acquired a perpetual 18.83-acre Conservation Easement on **the Dey property** next to Paradise Brook in Middletown
- Acquired a perpetual 14.25-acre Conservation Easement on the **Welch Farm** in Portsmouth

The magnitude of our land conservation accomplishments in 2011 was widely recognized and celebrated. For example, this year the Newport County Chamber of Commerce selected ALT for its Outstanding Community Achievement Award, the Aquidneck Island Watershed Council selected ALT for its Citizen of the Year Award and the Master Gardener Foundation of Rhode Island selected ALT for its Tradition of Excellence Award. "Please understand that these accolades and awards are just as much for you, our supporters, because you are a member of the ALT family and without you we could not realize and enjoy such great successes. We are a manifestation of the good will, generosity and long-term vision of our wonderful community," said Ted Clement, ALT Executive Director.