



# ANNUAL REPORT

FISCAL YEAR 2021

**Aquidneck Land Trust**

## OUR MISSION

*To preserve and steward  
Aquidneck Island's open spaces  
for the lasting  
benefit of the  
community, while  
connecting  
people with the land that defines  
the island's  
natural character.*

## Board of Trustees

Jonathan Gewirz | Chair  
Tom Hockaday | Vice Chair  
Zia Eftekhari | Treasurer  
Mark Marosits | Secretary  
Ellen Bowman  
Timothy Brown  
Charles Clarkson  
Bill Corcoran  
William W. Harvey II  
Dr. Martha McConnell  
Linda McGoldrick  
Steve McInnis  
Bettie Bearden Pardee  
Dwight Sippelle  
Meg Steiner  
Liz Taber  
Nancy Parker Wilson  
Conley Zani

## Board of Advisors

Annie Sherman Luke | Chair  
Mary Bush-Brown  
Carolann Brown  
Jameson Chace  
Lyn Comfort  
Ann Conner  
Trudy Coxe  
Steve DeLeo  
Lilly Dick  
Emlen Drayton  
Michelle Eckhart  
Ronald Lee Fleming  
Michele Foster  
Katherine Gagliano  
Anne W. Garnett  
Stephen A. Haire, Esq.  
George Gardner Herrick  
Nannette Herrick  
Leslie Ballard Hull  
Sam Howell  
Katherine Irving  
Ala Auersperg Isham  
Nancy Jamison  
Holly Janney, Esq.  
Sanne Kure-Jensen  
Mil Kinsella  
Elizabeth Leatherman  
Lisa Lewis  
Richard C. Loeb, Jr.  
Chandler Lyell  
John McColloch  
Deborah L. Merritt  
Arthur Murphy, Esq.  
Paul Nunes  
Sue Petrovas  
Denise L. Roberts, CFP  
Susan Ruf  
Jocelyn C. Sherman  
Jane Timken  
Robert E. Victor, CPA

Dear ALT Friends,

It is a testament to the dedication of our ALT board, staff, and community of supporters that the serious challenges of the past year have not dimmed our spirit or kept us from continuing (and even accelerating!) our land conservation work on Aquidneck Island. We have kept our sights focused on the mission and I am very pleased to share the results of our past fiscal year with you. Your commitment made this possible, and on behalf of our ALT team, I thank you for your time, advice, financial support, and belief in our shared goals.

Whether we live on the island year-round or visit it throughout the year, we don't have to try hard to see the carving away of treasured farmland, forestland, scenic views, and wildlife habitat. The good news is that our land conservation efforts are gathering speed, thanks to your support. In the past fiscal year, which ended September 30, 2021, we conserved two coastal properties in Newport (Cushing Coleman and EC Properties LLC, 13.62 acres), one public property (Ballard Park, 16.7 acres), and one agricultural property in Middletown (Sweet Berry Farm, 5.27 acres, adding to other conserved lands there). Since October 1, 2021, we have conserved three properties in Portsmouth (Glen Pasture, 7.56 acres, Rego Farmland 11.94 acres, and the Jones/Brooks Preserve, 20.95 acres), and one agricultural property in Newport (Swiss Village Farm, 25.03 acres). Several others are in process and we are not slowing down!

At our annual meeting on February 3, we welcomed two new board member, Stephen B. Huttler and Liz Taber, and honored departing board chair Jonathan Gewirz, who will remain on the board as *ex officio*. Tom Hockaday was appointed Board Chair, Conley Zani appointed Vice Chair, and Mark Marosits appointed Secretary. We also honored departing trustees Jane Kirkpatrick and Lois Vaughan, and thanked them for their service. We are grateful to all of our trustees and advisors for their expertise and guidance, and appreciate their dedication to our small but mighty organization.

We wish you a healthy and happy 2022, and we thank you for your continued commitment to protecting our island home.

See you on the trail,



Charles B. Allott, Esq.  
Executive Director



Jonathan Gewirz  
Board Chair



Photo credit: Jessica Pohl

Staff from left to right: **Alex Chuman** (Conservation Director), **Gretchen Markert** (Communications & Outreach Manager), **Laura Freedman Pedrick** (Development Director), **Meghan Harris** (Office Manager), **Julia Coll** (Development Assistant), **Martha Curley** (Finance Director), **Chuck Allott** (Executive Director)

# Milestones



Little Creek Preserve offers a half-mile loop trail and connects to the longer 10-mile Sakonnet Greenway Trail.



A newly-conserved 3.77-acre property on Ledge Road offers scenic views from Ocean Avenue.

## OCTOBER 2020

- ALT co-hosted an online seminar about planned giving with Schwab Charitable.
- ALT staff hosted family walks at Spruce Acres.

## NOVEMBER 2020

- ALT advocated for the successful passage of a \$5M Open Space Bond in Middletown. The funds will be used to preserve open space, and acquire, preserve, restore, and improve recreational areas.

## DECEMBER 2020

- Executive Director Charles Allott and water resource expert Elizabeth Scott spoke at the Land to Sea Speaker Series sponsored by Clean Ocean Access. They shared details of how ALT, the SNEP Network, and partners are working to repair damage, improve water quality, and protect our water resources.
- Our stewardship team completed 100 conservation easement and property site visits for 2020, fulfilling our perpetual obligation to monitor our conservation easements and fee lands.
- Two Newport landowners donated conservation easements, protecting 13.62 acres of land. Mary Cushing Coleman donated 9.85 acres and EC Properties LLC donated 3.77 acres. The Cushing Coleman property is located on Ocean Drive and includes the landmark geological formation known as Spouting Rock. The EC Properties LLC parcel is located on Ledge Road and has 200 feet of coastline.

## JANUARY 2021

- The Champlin Foundation awarded a grant for the construction of

a pavilion at Spruce Acres Farm. The structure will cover an existing asphalt pad, which has picnic tables in place thanks to earlier donations.

- Our campaign to conserve 7.56 acres of historic Glen Farm was fully funded thanks to the generosity of over 265 donors. A special thanks to RI DEM for their grant through the open space bond.

## **FEBRUARY 2021**

- ALT hosted its 31st annual meeting via Zoom. 150 members attended and celebrated achievements from 2020. We announced the winners of the Art & Writing Contest during the meeting.

## **MARCH 2021**

- ALT staff were featured as speakers in a Salve Regina University course taught by Dr. Jim Chace. The course, “Management 399: Special Topics: Non-profit business management,” examined the organization and function of non-profits.

## **APRIL 2021**

- A grant from the William H. Donner Foundation, Inc., underwrote a lecture given by Dr. Kelton McMahon of the Graduate School of Oceanography at URI. The lecture was titled “Modern Climate Change: Adapting to current changes while mitigating future disasters.” The grant also funded climate change units in science classes at Rogers High School and Portsmouth High School.
- The conservation easement on Ballard Park became final. The campaign to conserve this 16.7-acre treasure was a collaboration between the Ballard Family, the City of Newport, and ALT.
- Students at The Pennfield School created the “Pennfield Path” on the Sakonnet Greenway Trail. Students researched conservationists and created artwork using quotes from their subjects.
- ALT and volunteers expanded the community garden at Spruce Acres, creating new raised beds. The expansion was underwritten by grants from NRCS and the Eastern Rhode Island Conservation District.
- ALT and the Newport Tree Conservancy co-hosted a Tree ID Walk at Ballard Park. Joe Verstandig led the walk and ALT Conservation Director Alex Chuman shared details of the property’s history.

## **MAY 2021**

- ALT’s Merritt Fund distributed \$18,000 in grants to 13 grassroots organizations for conservation projects.
- Professional wetland biologist Kate McPherson led a Walk & Talk at Little Creek Preserve. Attendees learned about native plant and animal species.
- We announced the official opening of the Little Creek Preserve boardwalk! This feature is 165’ long and has benches, a viewing platform, and a stationary binocular station.
- The Newport City Council approved a grant for \$180,990 from the Rhode Island Infrastructure Bank for improvements to Almy Pond. The grant will also help restore a natural meadow to the site.



**A section of Portsmouth’s historic Glen Farm has been conserved and will continue to be used as a horse paddock.**



**ALT volunteers and staff expanded the ALT Community Gardens by constructing three new raised garden beds.**



**Our new boardwalk at Little Creek Preserve offers bench seating, a viewing platform, and a stationary binocular stand.**

- Ryan Fritz, a URI masters student, and Flo Reiche Blanco, a Salve undergrad, helped us accomplish our summer stewardship duties by performing monitoring visits and managing our properties and trails. Cassidy Curry, also a Salve undergrad, provided administrative support.

## JUNE 2021

- Biologist Gary Casabona of NRCS led a Pollinator Walk & Talk at Spruce Acres Farm, where he explained how to attract songbirds and pollinators with native plants.
- The Rhode Island Land Trust Council announced the RIWalks Challenge, a free activity that invites hikers to search for the 30 nature-inspired “creatures” hidden on land trust trails. ALT hosted two creatures, one on Spruce Acres and one at Oakland Forest.
- ALT’s Oakland Forest and Meadow property began construction of green infrastructure upgrades to convert overgrown stormwater basins at the edge of the meadow into Wet Vegetated Treatment Systems, or manmade vegetated wetlands. This effort will enhance their ability to filter out stormwater pollutants before they enter St. Mary’s Pond, a drinking water resource for the island. The improvements were part of the Island Waters Initiative, a collaboration of AIPC, ALT, Clean Ocean Access, and the island municipalities.

## JULY 2021

- Evening at Home was a great success! Dinner parties were held from Newport to Portsmouth, all to support ALT’s mission to conserve land. Save the date for our next Evening at Home events, July 13 and 14, 2022.
- ALT hosted online presentations titled “Citizen Planning 101,” with one event focused on each of the island’s municipalities. The events detailed ways to advocate within planning and zoning boards, city and town councils, and other decision-making bodies.
- ALT announced a land campaign to conserve 27.4 acres of land in Portsmouth, Rego Farmland and Jones Preserve. The properties feature farmland, forestland, wildlife habitat, and scenic vistas.

## AUGUST 2021

- A 5.27-acre section of Sweet Berry Farm was conserved. ALT has conserved 89.22 acres across four parcels at the farm.
- ALT advocated for passage of the Municipal Public Trust Dedication, signed into law by Governor McKee. The bill will give communities a powerful tool to safeguard key properties, enabling cities and towns to protect public parks and open space in perpetuity.
- The Scenic Third Beach partners and donors celebrated the project’s completion at Sachuest Point National Wildlife Refuge. This campaign raised funds to remove 77 telephone poles and bury the utilities. The effort restored the natural beauty of the historic area and will promote resiliency against storms and flooding. Scenic Aquidneck is a coalition between ALT, The Preservation Society of Newport County, and Preserve RI.



ALT’s free Walk & Talks are open to all! Check our website in the spring for upcoming events.



A new section of Sweet Berry Farm was conserved in August. The land will be used to plant strawberries and pumpkins.



The Scenic Third Beach partners celebrated the removal of 77 telephone poles and burial of utilities in the historic Paradise Valley area.

- A gathering was held at Ballard Park to celebrate the permanent conservation of the 16.7-acre Newport property. Combined with the adjacent 58 acres of land previously conserved by the Ballard family with ALT and the City, the property is now the 75-acre Carol C. Ballard Park & Wildlife Preserve.

## SEPTEMBER 2021

- One hundred and four golfers participated in the ALT Golf Tournament at Newport National Golf Club, an ALT-conserved property.
- ALT offered a Bird Banding Walk & Talk at Bailey Brook in Middletown. Attendees learned about migratory bird research from Dr. Jim Chace.
- Our new wooden pavilion was unveiled at Spruce Acres Farm... and is open for picnic-goers!
- Volunteers from St. Mary's Church in Portsmouth helped plant a pollinator garden at Spruce Acres. Thanks to USDA NRCS, Eastern RI Conservation District, and the RI State Conservation Committee for funding the garden.
- Our trails continued to serve as an important respite during the pandemic. Our trail counters recorded over 50,000 visits in the fiscal year.

### Save the Date!

2022 Golf Tournament: Monday, September 12

*Join us for a fantastic day of play at  
Newport National Golf Club.*

Register on our website or call  
Laura Freedman Pedrick at 401-849-2799, ext. 18,  
for details and sponsorship opportunities.

## Collaborations

Aquidneck Land Trust partners with organizations to support clean water, working farmlands, accessible parks and trails, scenic viewsheds, effectively managed wildlife habitat, and smart environmental policy.

**Coyote Smarts:** [www.coyotesmarts.org](http://www.coyotesmarts.org)

**Green Infrastructure Coalition:** [www.greeninfrastructureri.org](http://www.greeninfrastructureri.org)

**Island Waters:** [aquidneckplanning.org/projects/257/](http://aquidneckplanning.org/projects/257/)

**Scenic Aquidneck:** [www.scenicaquidneck.org](http://www.scenicaquidneck.org)

**Newport Open Space Partnership:** [www.newportopenspace.org](http://www.newportopenspace.org)

**HEZ/Women's Resource Center:** [newporttheequity.com](http://newporttheequity.com)



Representatives from the City of Newport, ALT, and the Ballard Family unveil the new sign for the Carol C. Ballard Park & Wildlife Refuge in Newport.



ALT's annual golf tournament at Newport National Golf Club offers a fantastic day of play and raises funds to conserve more land on Aquidneck Island.



Volunteers from St. Mary's Church in Portsmouth built a pollinator garden near the new pavilion at Spruce Acres Farm.



Proudly Supports  
**Aquidneck Land Trust**

[BankNewport.com](http://BankNewport.com)

Member FDIC

# Landowner Partners

The Aquidneck Land Trust has conserved 2,691.21 acres since its founding in 1990. We gratefully thank these very special individuals, families, businesses, neighborhood associations, municipalities, and other government agencies who have partnered with us to preserve and steward their land in perpetuity. Their vision for the future and appreciation of the past leave a priceless legacy.

Anonymous (2)  
Sandra B. Allen  
Lewis Arnow  
Friends of Almy Pond  
Mr. and Mrs. Daniel J. Alvarnas  
Edythe Anthony  
Muriel Anthony  
Armory Revival Company  
The Ballard Family  
Manuel J. Borges  
Mrs. Jean I. Braman  
Joe Brito, Jr.  
Robert and Judith Brooks  
Carolann Brown  
James F. Carlin  
James Chadwick  
City of Newport  
Clubhouse Partners, LP  
Corey/Sears Farm  
Denys and Margery Cousens  
Henry and Andrea Crump  
Crystal Spring Water Company,  
The Scott Family  
Mary Cushing Coleman  
John Deveau  
Loren Deveau  
The Dey Family  
The Dick Family

Joe and Kristal Dockery  
Jan Eckhart and Michelle Eckhart,  
Sweet Berry Farm  
Jan Eckhart and Ted Eckhart  
EC Properties LLC  
The Elshant Family  
Louis Escobar  
Roberta Faria  
The Faria Family  
Farmlands, LLC  
Farmscapes Holdings, LLC  
Greenscape, LLC  
Green Valley Country Club, Inc.  
Hamilton Family Charitable Trust  
Mrs. Samuel M.V. Hamilton  
Diana Harrison  
Mr. and Mrs. F. James Hodges, Jr.  
Steve and Irene Johnson  
The Kempenaar Family  
Joe Lacerda, Jr.  
Marcella McCormack  
Town of Middletown  
Middletown Main, LLC  
Middletown Open Space and Fields  
Committee  
Katherine M. Murphy  
The Nature Conservancy  
Newport Country Club

Newport National Golf Club  
John and Paul Nunes, Newport  
Vineyards & Winery  
Newport Water Department  
Norman Bird Sanctuary  
Larry and Mary Nunes, Anna  
Flaherty, and Edna North  
Peter Olaynack  
Donald and Helene O'Neill  
Bill and Barbara O'Reilly, Bally  
Machree Farm, LLC  
The Peckham Family  
The Pennfield School  
The Perry Family Partnership  
Manuel Peters, George Peters, and  
Marie Ney  
Town of Portsmouth  
The Preservation Society of  
Newport County  
RI Agricultural Land Preservation  
Commission  
RI Department of Environmental  
Management  
RI Water Resources Board  
Peter and Ann Randall  
Realty Financial Partners  
The Rego Family  
The Reposa Family

Carol Rodrigues and Nancy  
Cleasby  
Saint Mary's Church  
Salve Regina University  
Dennis Silvia  
The Silvia Family  
Mrs. John J. Slocum  
John J. Slocum  
Jason and Meredith Spitalnik  
F.M. Sullivan  
SVF Foundation  
Sweet Flag Partners  
George Thurston  
David R. Tibbetts  
U.S. Dept. of Agriculture's Natural  
Resources Conservation  
Service (NRCS)  
Valley Associates II  
The van Beuren Family  
John and Deborah Warner  
Katherine and Michael Waters  
Mr. and Mrs. James Webster  
Charles R. Whitehouse  
The Wicks Family  
Wild Moor, LLC

# Green Island Society

You can help conserve Aquidneck Island for future generations by making a planned gift to the Aquidneck Land Trust. Please let us know if you have included ALT in your estate plan so that we can welcome you to the Green Island Society. We honor this society throughout the year and thank its members for their generosity and foresight.

## Thank you to our Green Island Society members:

*Andy Arkway\**

*Dennis Bristow*

*Annie Castelnovo and Bill McMullen*

*Beth Everett\**

*Michele Foster*

*John\* and Joanne Gorman*

*Bruce Hoitt\**

*Nancy Jamison*

*Paul and Beverly Kelly*

*Roger and Sandra King*

*Sanne Kure-Jensen*

*Marcella Clark McCormack\**

*William Mershon\**

*Jim and Jane Moore*

*Paul Simone and Carol Chabot*

*Edwin G. and Catherine S. Singesen*

*Jonathan and Bettie Bearden Pardee*

*Drs. Christopher Pargellis and*

*Denice Spero*

*Don and Meg Steiner*

*Sheila Reilly*

*Lisa Trainor*

*Marjorie Ward\**

*\*DECEASED*

***Leaving a legacy to protect the island we love.***

*For more information, contact Laura Freedman Pedrick at [lpedrick@ailt.org](mailto:lpedrick@ailt.org) or 401.849.2799, ext. 18.*

# Conservation Update

Since the start of our last fiscal year on October 1, 2020, ALT has conserved nine properties totaling 101.07 acres of land on Aquidneck Island. This acreage includes farmland, forestland, and coastal land on properties across the island. Although the pandemic has led to escalating land prices and increased development pressure, ALT remains committed to conserving the key lands that provide our drinking water, local food production, scenic vistas, wildlife habitat, and public recreational opportunities. Our primary support comes from local residents, businesses, foundations, and governments. Thank you for believing in our mission and helping us to conserve the open spaces that define our island way of life.



*Over 25 acres of Newport's historic Swiss Village were conserved by ALT in December 2021.*

The Swiss Village Foundation (SVF) donated a conservation easement of 25.03 acres of land to ALT in December 2021, permanently protecting a landmark Newport property forever. Founded in 1999 by Mrs. Dorrance H. Hamilton, the SVF Foundation had been operating on the site since 2002. The Foundation sold the property to Ocean Hour Farm after donating the easement. ALT is grateful to the SVF leadership for their commitment to preservation and we thank Ocean Hour Farm for becoming the next stewards of this superb property.



# Evening at Home: Save the Dates!

Summer is coming and we hope you will save the date for our next “Evening at Home” event! We provide the delicious three-course meals, wine, flowers, and more...you provide the venue for your own special evening with family and friends. Look for registration information soon and select either Wednesday, July 13, or Thursday, July 14, as your “Evening at Home.” Thank you to the many supporters who purchased tickets last year!



## Celebrating 100 years



*Helping people since 1922*

Modern wealth management starts with a trusted relationship.



## Let's start planning for a brighter financial future.

We believe investors deserve better. To us, that means a wealth management approach that's rooted in open, transparent relationships.

With Schwab, you can expect low costs and full service—backed by a Satisfaction Guarantee. Talk with a Schwab Financial Consultant today for straightforward answers and actionable guidance.



### Visit or call me at the Providence Branch

Rebecca Allen  
VP: Financial Consultant  
75 Fountain Street, Suite R1, Providence, RI 02903  
[www.schwab.com/providence](http://www.schwab.com/providence) (401) 588-5021

charles  
SCHWAB

*Own your tomorrow.*

**Brokerage Products: Not FDIC-Insured • No Bank Guarantee • May Lose Value**

The Charles Schwab Corporation provides a full range of brokerage, banking and financial advisory services through its operating subsidiaries. Its broker-dealer subsidiary, Charles Schwab & Co., Inc. (Schwab), Member SIPC, offers investment services and products, including Schwab brokerage accounts. Its banking subsidiary, Charles Schwab Bank (member FDIC and an Equal Housing Lender), provides deposit and lending services and products. Presentations are informational and should not be considered as personalized investment advice or recommendations.

Wealth management refers to products and services available through the operating subsidiaries of The Charles Schwab Corporation, of which there are important differences, including, but not limited to, the type of advice and assistance provided, fees charged, and the rights and obligations of the parties. It is important to understand the differences when determining which products and/or services to select.

If you are not completely satisfied for any reason, at your request Charles Schwab & Co., Inc. ("Schwab") or Charles Schwab Bank, SSB ("Schwab Bank"), as applicable, will refund any eligible fee related to your concern. Refund requests must be received within 90 days of the date the fee was charged. Schwab reserves the right to change or terminate the guarantee at any time. Go to [schwab.com/satisfaction](http://schwab.com/satisfaction) to learn what's included and how it works.

©2021 Charles Schwab & Co., Inc. All rights reserved. Member SIPC  
CC1787869 (1119-9W1J) ADP106777FC-00 (12/21)



# Financial Summary for the Twelve Months Ending September 30, 2021

## TOTAL SUPPORT & REVENUE

Grants	\$ 418,250
Donations & appeals	294,990
Membership dues & other income	130,600
Net special events income	183,774
Net Investment income (available for general operation purposes)	1,596,985
Land Acquisition Donations & Pledges	5,010,318
In-kind contributions (value of donated conservation easements)	18,820,000
PPP loan forgiveness (funds received in FY20, forgiven in FY21)	104,300

**TOTAL SUPPORT & REVENUE \$ 26,559,217**

## TOTAL EXPENSES

Program Expenses	
Land Acquisition (including value of donated conservation easements of \$18.8M)	\$ 19,671,583
Stewardship	157,049
Membership & Education	153,906
Management & General	283,066
Fundraising	256,712

**TOTAL EXPENSES \$ 20,522,316**

**TOTAL NET INCOME \$6,036,901**

## NET ASSETS, beginning of the fiscal year

**\$ 18,588,210**

## NET ASSETS, end of the fiscal year

**\$ 24,625,111**

<i>Land &amp; Land Improvements (owned in fee)</i>	\$ 6,499,428
<i>Land Preservation Fund</i>	8,555,599
<i>Stewardship Investment Funds</i>	7,971,663
<i>Legal Defense Fund</i>	221,355
<i>Other Temporarily Restricted Funds</i>	74,662
<i>Merritt Neighborhood Fund</i>	134,642
<i>Spruce Acres, Little Creek &amp; Trail Capital Improvement Funds</i>	145,350
<i>General Operating Fund</i>	610,514
<i>Property &amp; Equipment</i>	411,898

## TOTAL NET ASSETS

**\$ 24,625,111**

If you would like a copy of the Aquidneck Land Trust's Audited Financial Statements for the twelve months ending September 30, 2021, prepared by Kahn, Litwin, Renza & Co., Ltd., please contact Martha Curley, Finance Director, at (401) 849-2799 or email mcurley@ailt.org.

## GENERAL OPERATING ACTIVITY (included within the above figures)

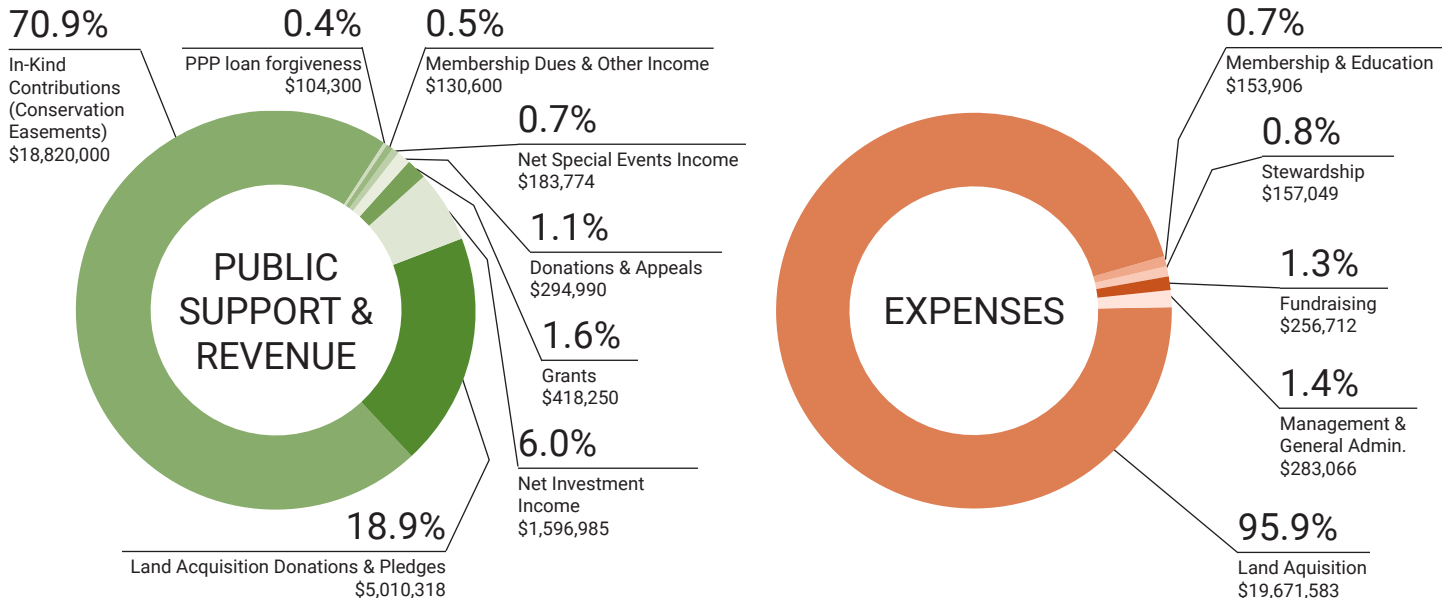
Grants	192,355
Donations & appeals	239,596
Membership dues & other income	130,600
Net special events income	183,774
Net Investment income (available for general operation purposes)	155,488
PPP loan forgiveness (funds received in FY20, forgiven in FY21)	104,300

**TOTAL GENERAL OPERATING SUPPORT & REVENUE \$ 1,006,114**

**TOTAL GENERAL OPERATING EXPENSES (867,809)**

**GENERAL OPERATING NET INCOME \$ 138,305**

As of September 30, 2021, ALT had preserved and protected 2,641 acres at a cumulative cost of approximately \$43,493,000, exclusive of legal and administrative costs related to the purchases.



# By the Numbers 2021

## WATERSHEDS

**43**

Properties within drinking watersheds protected

**21.5%**

Of land within drinking watersheds protected

## EDUCATION

**4**

Community workshops on land use planning

**525**

People reached at educational events, walks, and presentations



## AGRICULTURE

**1,180**

Acres of farmland protected

**38**

Projects with farmland

**100%** of ALT-owned farmland is leased

## ALT OFFICE

**7**

Staff

## CONSERVATION

**2,691.21** acres conserved 1990-2021

**89** Conserved properties 1990-2021

**72.04** Acres conserved (2021)

**6** New properties conserved in 2021

**11%** Of Aquidneck Island conserved by ALT 1990-2021

**77** Utility poles removed in scenic Paradise Valley as part of Scenic Aquidneck partnership



## RECREATION

**852** Acres of recreational land protected

**36** Public access properties

**2** Golf courses protected

**18** Parks protected

**13** Miles of free public trail maintained



## STEWARDSHIP

**150** Native plants planted at new pollinator garden at Spruce Acres

**1** New picnic pavillion constructed

**12** Community garden beds rented

**165** Feet of new boardwalk open at Little Creek Preserve

**100** Site visits to monitor conservation easements

**42,350** Trail visits in 2021





*Aquidneck Land Trust is an exemplary organization that we are very proud and honored to support!*



NEI is focused on responsible and sustainable development, planning, and conservation as well as providing resilient engineering and environmental science-based designs.

We have a commitment to give back to Newport County and Rhode Island organizations whose focus is set on environmental preservation.

**Civil - Survey - Structural - Environmental - Design**  
3102 E. Main Rd. Portsmouth, RI | 401.683.6630 | nei-cds.com



**Proud to support the Aquidneck Land Trust**

*Newport*  
RESTAURANT GROUP



CASTLE HILL | 22 BOWEN'S | THE MOORING | BAR 'CINO  
BOAT HOUSE | TRIO | HEMENWAY'S | WATERMAN GRILLE  
AVVIO | SMOKE HOUSE | IRON WORKS | PAPA RAZZI | LA VECINA  
*and our latest, FOODLOVE MARKET in Middletown, RI*

[NEWPORTRESTAURANTGROUP.COM](http://NEWPORTRESTAURANTGROUP.COM)



# CORRIGAN FINANCIAL, INC.



**Helping you get from where you are...  
to where you want to be.**



**Personal Financial Planning  
Investment Management  
Tax Planning & Preparation**

[www.corriganfinancialinc.com](http://www.corriganfinancialinc.com)  
401.849.9313  
747 Aquidneck Avenue  
Middletown, Rhode Island

# Philanthropic Support

Our heartfelt thanks to all those who contributed to the Aquidneck Land Trust during this fiscal year, which concluded on September 30, 2021.

## \$100,000 and above

Heather and William Burgess  
Kim and Larry Ingeneri  
Dwight and Susan Sipprelle  
Patrick Kerins and Terry Morgenthaler  
State of Rhode Island  
The Loebs Family Foundation  
Jane M. Timken  
van Beuren Charitable Foundation

## \$50,000 to \$99,999

Bill and Jacalyn Egan/  
The Dinury Foundation  
Rita and Jonathan Gewirz  
Ralph H. and Ala Isham  
Prince Charitable Trusts

## \$25,000 to \$49,999

Apple Pickers Foundation  
Rev. Anne and Paul Bolles-Beaven  
Richard and Fanchon Burnham  
The Coll Family Foundation  
Bernard S. & Sarah M. Gewirz Foundation  
Peter D. and Eaddo Kiernan  
William and Elizabeth Leatherman  
George and Sue Petrovas  
The Gruben Charitable Foundation  
The William H. Donner Foundation  
Diane B. Wilsey

## \$10,000 to \$24,999

Catie and Chris Benzak  
The Bigbird Fund  
Ellen and Steven Bowman  
Champlin Foundation  
Kim and Glenn Darden  
EJMP Fund for Philanthropy  
Steven and Katrina Gewirz  
Stephen A. Haire, Esq.  
Kane Wallace Foundation  
Koppelman Family Foundation  
John and Brookie McColloch  
Linda McGoldrick  
William and Amelia Medeiros  
Samuel and Ann Menco  
Jonathan and Bettie Pardee  
John and Linda Purdy  
James and Virginia Purviance  
Rhode Island Foundation  
Rodgers Family Foundation  
Suzie Schochet  
Jocelyn and Buck Sherman  
The Timken Matthews Family Foundation

## \$5,000 to \$9,999

Anthony and Allison Allott  
Patricia and Philip Bilden  
Barbara and Duncan Chapman  
Comfort Charitable Foundation  
Zia and Denys Eftekhar  
Thomas Fay

Fields Pond Foundation, Inc.  
Gonzalez Family Foundation  
John Harris and Linda Sawyer  
Dolores Houston  
Nancy Jamison and Steve McInnis  
M.R. Kidder Charitable Fund  
Stephen and Diana Lewinstein  
Robert and Heidi Manice  
Charlotte and Paul Marshall  
Linda and William McQuillan  
NewportFed Charitable Foundation  
David and Denise Olney  
People's Credit Union  
James Richardson  
Rockland Trust Charitable Foundation  
Stephen Seiter and Mary Joan Hoene  
Jeffrey and Cathy Siegal  
Clark and Krista Sturtevant  
The Betty Byrne de Zahara 1997  
Charitable Trust  
The Howell Family Charitable Foundation  
Happy van Beuren  
Van Liew Trust Company

## \$2,500 to \$4,999

Bardorf & Bardorf PC  
BayCoast Bank  
Pam Buchmueller  
Paul Gricus and Donna Cameron  
Ann Conner  
Peter Damon  
Virginia Decker and Colin Keith  
Lilly Dick  
Emlen and Liz Drayton  
Doug and Lisa Garavanta  
Dr. Richard J Zienowicz and  
Kathleen W. Glassie  
Gustave White Sotheby's Int'l. Realty  
Neal and Sara Harrell  
Darryl B. Hazel and Sheila McEntee  
William C. Martin and Thomas Hockaday  
David and Kathryn Hohl  
Maureen Cronin and Mark Marosits  
Edith S. McBean  
Narragansett Engineering, Inc.  
Patricia and Torre Peterson  
Denise L. Roberts  
Stanley and Martha Livingston Fund  
Philip and Joan Virgadamo  
Teryn and Karl Weintz  
Jeremy and Amy Wintersteen  
Michael and Conley Zani

## \$1,000 to \$2,499

Anonymous (7)  
Lawrence and Elizabeth Allen  
Amica Mutual Insurance Company  
Douglas Newhouse and Holly Bannister  
Benzak Foundation  
Daniel and Nancy Bills  
Richard F. Callahan  
Charles Schwab & Co., Inc.  
Charles and Eilish Clarkson  
Michael R. Corcoran

Bill and Karen Corcoran  
Dan August Cordeiro  
Corrigan Financial, Inc.  
Richard Cummins  
Arthur Daily  
Scott and Leslie Deardorff  
Stephen and Julie DeLeo  
Bradley and Elizabeth Dellenbaugh  
Karin and Thomas Dolan  
Benjamin and Alexandra Ducas  
F.L. Putnam Investment Management Co.  
David and Marilyn Ferkinhoff  
Richard and Rita Finn  
Edith Fletcher and Robert J. Cornett  
Lisa and George Francisco  
Steven and Linn Freedman  
Charles Gardner and Alice Bridge  
David\* and Linda Gordon  
Joanne Gorman  
Tim Hall  
Tara McGowan and Michael Halle  
Hamilton Family Foundation  
Edward and Wendy Harvey  
William and Karen Harvey  
Deborah H. Jennings  
Alice and David Johnson  
Stephen and Irene Johnson  
Elizabeth and William Kahane  
Steve and Jane Kirkpatrick  
Klugman Family Charitable Fund  
Michael Landsburg  
Reynold and Marlene Larsen  
Lisa S. Lewis and Bart Dunbar  
Richard C. Loebs, Jr., and Susan Behan  
Chandler and Marilyn Lyell  
Tori Lyle  
Ronald and Kati Machtley  
Alexis J. Margreiter  
Chris Arbuthnot and Martha McConnell  
Meghann McKale  
Juliette C. McLennan  
Sarah McNeill  
Elizabeth and Sarah Minifie  
John and Allison Morgan  
Tom and Kelley Newman  
Newport Restaurant Group  
Pangaea Logistics Solutions, Ltd.  
Christopher T.H. and Janet Pell  
Michael and Paige Pieroni  
QMed Innovations  
Frank and Betsy Ray  
Curt and Julia Richardson  
Alessa Rispoli and Charles Cox  
Rockland Trust Company  
Susan Ruf and Michael Walsh  
Sagecrest  
Jeff Saletin  
Sand Foundation  
Richard and Gloria Schmidt  
Lorraine and Michael Schmitt  
Turner Scott, Esq., and Kathleen Pratt  
William and Louise Scott  
Trish and Robert Seward  
Edwin and Catherine Singen  
Edward and Kate Sisk  
Mark V. Sutherland

Abigail Test  
Adam Thayer  
Jennifer and Ethan Titus  
Asheton Toland  
Calvin Tomkins and Dodie Kazanjian  
Archbold and Helene van Beuren  
Gerald and Margaret Vento  
Webster Bank  
William Webster  
Melissa Welch and George Krol  
Mr. and Mrs. William N. Wood Prince  
Carol and Kelly Worth

### **\$500 to \$999**

Jennifer W. Ackermans  
Richard and Nancy Adams  
Charles Allott and Ellen Nichols  
Leon and Debbie Amarant  
BankNewport  
Anne Becker  
Thomas and Julie Borden  
Adam Chuman and Megan Joseph  
Alan Chuman and Janet Wallman  
Andrew Chuman and Sandra Lopes  
Citizens Charitable Foundation  
Clements' Marketplace, Inc.  
William and Gail Crimmins  
CWA Architect Inc.  
John and Kathy Damon  
Karen Deibert  
Robyn Kennedy and Patrick Desocio  
Anthony and Renee DiNovella  
Florence L. Everett  
Monica and Mark Filanowski  
Flynn Financial Group  
Jim and Dottie\* Garman  
James and Patricia Giblin  
Jeffrey and Michaela Gouveia  
Chris and Kate Greenman  
Patrick and Lauren Haley  
Jane Hollowell  
Kathy and Peter Hendricks  
George and Nannette Herrick  
Kathy and Pierre Irving  
Donna Kelly  
Mary F. Kesson  
Matthew and Michelle Kirby  
Joseph Kobylak and Liz Taber  
Chris and Susan Ledoux  
Lorna R. Lewis  
Stephanie W. McLennan  
Anne Mills  
James and Jane Moore  
Alfred and Joan Morris  
Bruce and Cheryl Munick  
Marisa and Martino Nardo  
Newport Garden Club  
Kathleen and Greg Norden  
Thomas and Agatha Perkins  
Josie Rock  
James and Alice Ross  
Audrey Royer  
Bayard and Pamela Russell  
Eugene and Linda Salvatore  
Ken Snyder  
Dr. Denice Spero and  
Dr. Christopher Pargellis  
Mark and Dana Spring  
Douglas and Lynda Stevenson  
Joe and Mary Studlick  
Lynn Thurston

Dr. J. Mark Ryan and Ms. Linda Ujifusa  
Martha Ullman  
Daniel and Margaret Warburg  
Robert and Linda Watts  
Sabine Feldman and Mark Witcher  
Chris and Laura Yalanis

### **\$250 to \$499**

Anonymous (2)  
Rebecca and Chuck Allen  
Belgravia Imports  
Bowen's Wharf Co.  
Ann and Pelham Boyer  
Nicholas and Diane Brown  
Mary and David Bush-Brown  
Robert and Mimi Carrellas  
Robert and Margot Ceres  
Paul Simone and Carol Chabot  
Coach House Condo Association  
Barbara and Frank Coleman  
Anne Marie and Timothy Corbett  
Daniel and Celine Corrigan  
Stuart and Monica Craig  
Richard C. Crisson and Roderick O'Hanley  
Murray and Judith Danforth  
Cathy and Paul Del Nero  
Abigail Demopulos  
Christina Dierolf and Tim Ferreira  
Michael Dupré  
Joseph and Melissa Easley  
Jan Eckhart  
David and Mary Ann Fiaschetti  
Liz Fields  
Ronald Lee Fleming  
Jeffrey and Charlene Fletcher  
Andrew and Christine Fremer  
Thomas and Joan Galvin  
Bob Gerber  
Lyndsey Gibbons Neff  
Brian R. Gingras  
Samuel and Kathleen Goldblatt  
Janlori Goldman  
John and Rose Goltman  
Leonard Grace  
Wilbur and Sharon Heller  
Samuel and Anne Howell  
Molly Hurff Price  
Paul and Joni Jablansky  
Peter Jefferys  
Linda T. Jenkins  
Mary M. Jennings  
Alice and David Johnson  
Savannah Kacher  
Kasischke Family  
Rick and Jill Kearns  
Katharine Kelly  
Sharron Kenney and Jeffreys Johnson  
Charles Kiven  
Donald and Dianne Koch  
Paul Kochis  
Douglas Kohler  
Patricia Leonard  
James and Pauline Lewis  
Tiina M. Liiv  
David and Mary MacBain  
Geoffrey and Loretta Marion  
David and Annegret Miller  
Francisco Montero  
Thomas and Mary Moore  
Harry and Cheryl Mrozowski  
Mark Muetterties and Jacqueline Colbert

Arthur Murphy  
Rupert Nesbitt  
Mary Ann Nichols  
Patricia O'Connell and John Wilson  
Maureen O'Donnell  
Tim and Dorothy O'Reilly  
Thomas Palmer and Dominique Alfandre  
Joshua and Amy Parks  
Kenneth and Sandra Pattie  
The Reverend Jennifer Pedrick  
Nancy and Bill Peresta  
Sara and Michael Pimental  
Lawrence and Pamela F. Quinn  
John and Suzanne Reid  
Sharon and Joseph Reynolds  
Rhode Island Public Defender  
Ellen Roberts  
Susan Rodd  
Timothy and Nancy Ryan  
Salve Regina University  
Stephen Sams and Kate Rooney  
Karen and Stephen Saucier  
Kenneth and Tia Scigulinsky  
Eric and Elizabeth Shealy  
Robert and Carolyn Silva  
Cynthia Sinclair  
Samuel and Jill Sirrico  
Tim and Linda Somes  
Charles and Victoria Stengel  
Anson and Marilyn Stookey  
David W. and Hilary G. Stookey  
Michael A. Taylor  
Arthur and Alice Thomas  
Lynda Tobin Purcell  
Kerry Tyson and Zack King  
Sue Vanderhoof and Bob Janiesch  
Geraldine and Gary Vitale  
Alan Wallace  
Thomas and Margaret Waugh  
Rian and Susan Wilkinson  
Katherine Wilme  
Frank and Mary Wojciechowski  
Eve Woodhull

### **\$100 to \$249**

Anonymous (3)  
A 1 Paving, LLC  
Robert and Christina Agnew  
Jose Aguon  
Peter and Blair Alexander  
M. Therese Antone RSM  
Brittany Arbo  
John Armor  
John and Emily Bagwill  
Doin and Jane Bally  
Wayne Barnes  
Stephen and Debbie Barth  
Richard and Mary Frances Bauchspies  
Belgian School for Psychoanalysis  
Berthon USA  
Rebecca Bertrand  
Guy Bissonnette  
Patricia Bliss Guest and Iain Guest  
Henry Bodah  
Frances Booth  
Richard and Rita Borgeson  
Linda Boudewyns  
John Brady  
Brick Alley Pub & Restaurant  
Tara Bronson  
John and Winnie Broughan

Maryellen Atkins and Tim Brown  
 Brownstone, Inc.  
 Adrian and Matthew Buechner  
 Maggie Bulmer  
 Prof. Robert Burkert  
 Tom and Alessandra Burnham  
 James and Elaine Burress  
 Peter and Mary Caine  
 Aurora Cammarata  
 Richard Carmichael and Maggie Jones  
 Stacey and Scott Carter  
 Richard Casten and Carin Cookman  
 Marie Cespedes and Ernest Levesque  
 Dean and Annie Chase  
 Samuel and Patricia Chase  
 Mrs. Taylor Chewing  
 Alex Chuman  
 Alicia Cipriano  
 Josh Clements  
 Mr. and Mrs. J. Stephen Clifford  
 Patricia Coffey  
 William E. and Susan A. Collins  
 Susan F. Cooper  
 John and Lori Corbishley  
 Marjorie Cottle  
 Sara Cowey  
 Trudy Coxe and James Gaffney  
 Paul B. Crabb  
 Sandra Craig  
 Lawrence and Anne Crawford  
 William &. Genevieve Croll  
 Mike and Beth Cullen  
 Robert Cummings  
 Keri Cunningham  
 Jon and Sue Davies  
 Richard and Kathleen Davis  
 Donna DeAscentis  
 Paul and Valerie Debrule  
 Joan DeFinis  
 Sarah Atchley and Nicholas Del Greco  
 Frances G. Delasanta  
 Lou and Mary DiRienzo  
 Maryellen Doherty  
 Conrad J. and Karen Donahue  
 Julia Driscoll  
 Erica Driver  
 Nancy DuBreuil  
 East Coast Construction  
 Edward Jones Investments  
 Julie Eldredge  
 Anne Ellingwood  
 Lisa Elliott  
 Stephen Elman and Joanne D'Alcom  
 William Emmet  
 Benjamin Emory  
 Esther Emsellem  
 Estes Twombly & Titrington Architects, Inc.  
 Mary Esteves  
 Keith Fagan  
 Mario and Corina Favorito  
 Michael Feldman  
 Mary Lou Findley  
 Edwin and Angela Fischer  
 Charles and Johanna Fitzpatrick  
 Don and Joan Fletcher  
 Gail Forbes and Linda Ludwick  
 Doris Foss  
 Tim Fraundorf and Frank Czerwony  
 Lynn Freeland  
 Cathy Freeman  
 Benjamin V. and Helen M. Furriel  
 Katherine and Joseph Gagliano  
 Sebastian and Katherine Fairchild  
 Howard Garland  
 James and Deborah Gedney  
 Rhonda Gilbert  
 Christine Ginsburg  
 Ann Gizzi  
 Lynne F. Glickman and Mark Kanter  
 John and Eleanor Gobis  
 Julie Goggin  
 Karen Goldin  
 Thomas and Claudia Gorman  
 Katherine Gozdur  
 Gray Matter Marketing LLC  
 Warren and Linda Gray  
 Maureen Greichen  
 Kevin and Domenica Hagan  
 William and Judy Hall  
 Phip and Cindy Hallowell  
 John Harmon  
 Stacy Harris  
 Janice M. Hart  
 Peter Harty  
 Vernon A. Harvey, Esq.  
 Michael L. and Susan E. Hayes  
 Mr. and Mrs. Thomas M. Haythe  
 Robert and Angela Healey  
 James G. and Katherine C. Henning  
 Curtis and Lindsay Hill  
 Leslie M. Hogan  
 Jennifer E. Hole  
 Keith C.\* and Maris S. Humphreys  
 David and Carol Hutchinson  
 IBM International Foundation  
 Duncan and Jean Ingraham  
 Peter and Diane Janaros  
 Barbara Jones  
 Steve and Janet Kasparian  
 Jill and George Kassis  
 Don and Caroline Kaul  
 Marianne Keeley  
 Paul and Beverley Kelly  
 Michael Kenfield  
 Susan and John Kenny  
 John Devlin Keogh  
 Chris and Kelli Kidd  
 Robert and Susan Kieronski  
 Ellen Kiley  
 Mil Kinsella  
 Jennifer and Tony Klemmer  
 John and Barbara Kneeland  
 Walter and Kay Kosinski  
 Petri Kymlander and Martha Curley  
 Peter H. La Freniere  
 Eileen Lavery  
 Jean Michel Le Bot  
 Kerri Lemoie  
 Betsy and Steve Leslie  
 Louis and Susan Letendre  
 Ellen Leys and David Raboy  
 Bevan Linsley  
 Andrew and Grace Lyell  
 John and Patricia Doyle Lynch  
 Sharon V. Lynch  
 Thomas F. and Andi Lyons  
 Diane MacEachern  
 Therese and Mark MacKinnon  
 David Mackney and Lauren Sousa  
 David MacLean and  
 Rosalind Vaz MacLean  
 James Maher and Catherine Labiak Maher  
 Rabbi Marc and Jacqueline Mandel  
 Peter and Michele Manning  
 Linda Marcello  
 Ronald P. Marsh  
 Jeffrey Marshall and Katharine B. Dodge  
 Karen and Julius McGovern  
 McGrath Clambakes and Catering  
 Earl and Elizabeth McMillen  
 Dennis McNamara  
 Joseph and Victoria Mele  
 Deborah L. Merritt  
 Constance Metcalf  
 Russell and Beth Milham  
 Peter and Sandy Miniati  
 Richard and Sharon Morgera  
 Carlotta Morris  
 Amy Moses  
 James and Carolyn Moy  
 Thomas Murphy  
 Susan and William Murphy  
 Claire Murtaugh  
 Daniel Mutty  
 Peter and Suzanne Newbauer  
 David and Melanie Niemiec  
 Paul A. Norbury  
 Tara O'Keefe  
 Patricia O'Donnell  
 Teresa O'Donnell  
 Eric and Cristina Offenberg  
 Paul and Patricia Onofrio  
 Carrie Ortner  
 Jill Pachla  
 Joanne Packer  
 Michael and Doreen Palmer  
 William and Edna Parker  
 Patrick's Residential Management Services  
 David and Laura Pedrick  
 Mary A. Pedro  
 Michael Peixoto  
 Wayne and Alice Perras  
 Alan Perry and Benjamin Paster  
 Audrey and Donald Pfeiffer  
 Joseph and Susan Pichler  
 Barbara Pike  
 Michael and Elizabeth Pinto  
 Terri Pinto  
 Mr. and Mrs. Jeff Plumb  
 Peter Portney  
 Portsmouth Veterinary Clinic  
 Laura Poulin  
 Anne Powderly  
 Quindecim  
 Rebecca Quintal  
 Andrew and Jill Radel  
 Brad and Cara Read  
 David and Leslie Reed  
 Phil Reid  
 Sheila Reilly and Peter Cosel, Esq.  
 Sandra Rezendes  
 William and Donna Richards  
 John W. and Peggy Richmond  
 Jeffrey and Janet Ringuest  
 Jennifer Roach  
 Marie Robinson  
 Taylor T. Rock  
 Richard and Brenda Rodrigues  
 Heidi Rosecrans  
 Steven and Sara Rosenbaum  
 Carol Ryan and Ken Osbon  
 Mary Pat Ryan  
 Robert Sabel  
 Joanne Santaniello  
 Jessie Sargent  
 Leslie and Steve Saunders

Kurt and Mary Schlichting  
Sea Whale Motel, Inc.  
Shamrock Electric, Inc.  
Adrienne Shaw  
Derek Luke and Annie Sherman Luke  
SHS Pest Control  
Wilder and Enedina Snodgrass  
Christopher and Anne Spaight  
Colonel and Nancy Spain  
Betsy Staples  
Elizabeth C. Stevens  
Earle and Lisa Stubbs  
Timothy Sugrue  
Dennis Sullivan  
Stephen M. Sullivan  
CAPT Richard W. Talipsky, USN (RET)  
Peter and Judith Tarpgaard  
Anna W. Templeton Cotill  
David A. Thalmann  
The Pennfield School  
Michael and Denise Thomas  
James and Jill Tobak  
Joseph and Leslie Tomaino  
Christopher G. Tompsett  
James Toppa  
Robert and Elizabeth Trainor  
William and Janet Tumber  
Joyce Turcotte  
Mary Jo Valdes and Dave Davis  
John Van Dyke  
Alfred and Frances Van Liew  
Jim and Sally Vanicek  
JoAnn Vanicek  
Hiltrud Walsh  
Michael and Bobbi Warren  
Tarleton Watkins II and Janet Atkins  
Rabbi Loel and Patricia Weiss  
Roger and Susan Wells  
Bob and Ann Weston  
Mary Whitehouse  
Betsy Wiggins  
Christine Winslow  
Saul and Susan Woythaler  
Frederick and Geraldine Zilian  
Emily Zurlnick and Alan Bishop

#### Gifts under \$100

Anonymous  
Edward and Patricia O'Neill  
Casey M. Ackerman  
Shawn Ackerman  
Jean M. Alvanas  
John Andrews  
Susan Angier  
John and Deborah Anthony  
Jan and Kathy Armor  
Richard and Christine Bagley  
Stephen and Elaine Bakios  
Jane Bally  
William Barbour  
Irving Barrett  
John and Susan Baylog  
Malana Beese  
Harold and Janet Belson  
Anne Berman  
Judith Beyar  
Anthony and Lisa Bliss  
David E. Boenning  
Matthew Bourgeois  
Mattison Boyer  
Glenn Bradfield  
Alan and Janice Branco

Helen Brennan  
Thomas Briody  
Thomas and Mary Ellen Bronson  
Ilse Buchert Nesbitt  
Molly Buettner  
Francis Burke  
Caleb Bush-Brown  
Linda Butterworth  
Judith Byrnes  
Ben Caine  
Christopher Campbell  
Diane Caplin, Ph.D.  
Katherine and Christopher Carbone  
Jason and D'Arcy Carr  
Brian J. and Nancy Carroll  
Nancy Caswell  
Jacqueline Cavallaro  
Roderick A. Cavanagh  
Charles and Toni Ciany  
Susan and Peter Cinner  
Shelby Coates, Jr.  
Christopher and Kelley Coen  
Andrew Coll  
Contessa Communications Consulting LLC  
Jean and Paul Conway  
Jeanne Corser  
Maurice Covino  
Robert W. and Edith Cowley  
Mildred Cozzens  
Christa and Will Cronin  
Gregory Cunningham  
Marilyn D. Curtis  
Kerry Daley and Graeme Smith  
Susan F. Daly  
Joan Davis  
Monica DeAngelis  
Carol DeCosta  
Dr. and Mrs. Joseph Demayo  
David and Debra Demming  
Melissa Desjardins  
Carl and John Digregorio  
John and Erin Dollard  
Mary Beth Dolohanty  
Joseph Doran, Jr.  
Paul and Liz Doucette  
Joyce Douglas  
Easton's Point Real Estate Trust  
Richard and Marguerite Elliott  
Ewens Consulting  
Suzanne Fahy  
Albert and Theresa Farrell  
Amy and Timothy Fater  
Scott and Lauren Field  
Michael Finerty  
Timothy and Diane Flaherty  
Roger and Jane Fontaine  
Kathy Foulke  
Mary and Richard Fournier  
Arthur and Camille Frankel  
Bari Freeman  
Dr. James Freess and Dr. Sondra Gold  
Barbara French  
Volker Frick  
Ann Gardella  
Glenn R. and Kristie Gardiner  
Richard and Rita Garland  
Janet Garnier and Henry DiPietro  
Terrence Gavan  
The Gerry Family  
Mrs. Barbara Ghazarian  
Joseph and Lucille Giarratano  
Pamela A. Gilpin

David Gleason  
David and Jennelle Goodburn  
Alec and Christine Grande  
Emily Greagori  
Sarah L. Gretzky  
Nancy Grieb  
Dianne Grinnell  
Rick and Terry Grosvenor, Jr.  
Tom and Janice Gunzelman  
Donald and Sylvia Hampton  
James and Lenice Harrington  
Jeremiah Harrington  
Meghan and Frank Harris  
Adrienne Haylor  
Kevin and Sally Ann Healy  
Leslie M. Henderson  
Peter Henshaw  
John and Mary Hirschboeck  
Jan and Katherine Hoftun  
Brian and Lori Hogan  
Molly Holland  
Joan Hopper  
James Houle  
Carol Hovey Stallman  
Nancy Hughes  
Debra Huntington  
Jo Ann Faris and Frederick Hussey  
Jane Iandolo  
Peter M. Iascone  
Linda Dillon Iribarren  
Mary T. Jackson  
Samuel and Ruth Jernigan  
Jenny E. Johnson  
Mary Johnson and Chuck Beltz  
Robert and Denise F. Johnson  
Victoria Johnson  
Brian and Judy Jones  
Judith Kalfon  
Sharon Keeley  
Megan Kelly  
Robert and Lourdes Kelly  
Thomas Kennedy  
James and Cynthia Killavey  
Stephen Kirby  
Marcia Kirkpatrick  
Siena Kissel  
Elizabeth Kneiper  
Paul W. and Shirley Lally  
Abigail Lambert  
Michelle Lamuniere  
Briggs Larkin  
Tom and Margaret Leary  
Mary Ellen Lees  
John Litherland  
Richmond Lloyd  
Lois Vaughan Music  
Helga Lustig  
Owen Lynch  
William and Sheila Mackintosh  
Joan Macomber  
Shelley L. Mahood  
The Hospice Team and Managers of  
Community Nurse Home Care  
Pete and Pat Martin  
Julie Maschler  
Juliet Max Muller  
Elizabeth McBreen  
Janet McCarthy  
Richard and Deborah McCarthy  
Dennis and Susan McCoy  
John McDonald

Ian and Elizabeth McEvily  
 Colleen McGrath  
 Caroline McNamara  
 Thomas and Marybeth McSparren  
 Ruff and Polly Meadows  
 Michael and Elizabeth Mello  
 Carol Miller  
 Jay and Pauline Minkin  
 Joann Mitchell  
 Kiki Mitchell  
 Mark and Marilyn Moffett  
 Elizabeth A. Moloney  
 Jeffrey and Phyllis Moniz  
 Kelly Moran  
 Robert and Edith Morin  
 Peter and Elizabeth Morley  
 Sharon and Kevin Morrison  
 Barry and Beverly Murphy  
 John and Kathleen Myers  
 William and Susan Nahill  
 Dr. Arlene Nicholas  
 Bob and Alyson Novick  
 Robert and Patricia Obara  
 Paul and Deborah Odell  
 Elizabeth Oestreich  
 Gerard M. O'Malley  
 Nancy O'Neill  
 Rosemary Page  
 Steven Pageau  
 Susan Panaggio  
 Dale and Donna Paquette  
 Steve and Sandy Parks  
 Irene Pasyanos  
 John and Monique Peabody  
 John and Joan Peabody  
 Dwayne and Patty Peckham  
 Nancy Pedrick  
 Thomas Perrotti  
 Valerie Perry  
 Suzanne and William A. Pettit  
 Timothy Phelps  
 Stanley and Aleksandra Pianka  
 Kirk Pickell  
 Nina Pinnock  
 Jessica Pohl  
 Patricia Pollitzer  
 Clark Poston and Maggie Vale  
 Susan Bowen Powers  
 Holly Prentice  
 Ken and Alicia Quirk  
 Donald and Rohalt Ramsbottom  
 Norbert and Margie Rattay  
 Edmond and Lisa Rego  
 Denise A. Reniere  
 Nicole Rice  
 Peter Richtmyer  
 Daniel Robertson  
 Michael Robey  
 Peter and Kim Robey  
 Janet L. Robinson  
 Michelle and Bill Roche  
 Ann Rossman  
 Susan Ryan  
 Sally S. Sadler  
 Joanna and Sarina Salvo  
 M. Theresa Santos  
 Rebecca Sattel  
 Victor and Patricia Sawicki  
 Susan Schenck  
 Howard Schlesinger  
 Jean Scott  
 Robert and Virginia (Pedrick) Searle

Ellen Secrest  
 Mr. and Mrs. Bill Seiple  
 Christopher and Patricia Semonelli  
 Susan M. Walsh and Brian D. Shanley  
 Vivian and David Shaull  
 John F. and Pat Sheehan  
 Gay Sheffield  
 Edward Sherman  
 Orinda Sherman  
 Richard and Linda Silverman  
 Leonard and Prudence Silvia  
 Sisters of St. Joseph of Cluny  
 Edward J. and Christie Smith  
 Elizabeth Smith  
 Kris Smith Lavoie  
 Elena Soini  
 Hannah Jones and Charles Sokolowski  
 Ann Souder  
 Judy and Bill Souza  
 John and Jill Spohn  
 Katherine Stack  
 Don and Sue Stanhope  
 Kathy and Peter Stark  
 George Stecker  
 Evelyn Sterne  
 Kevin and Elaine Stiles  
 Daniel C. and Tracey L. Stitch  
 Everett and Kristine Stuart  
 Ann L. Sullivan  
 Justin Terlisner  
 James D. and Lorna Tiernan  
 Beverly Tiffault  
 Toohey Family  
 Lynne Torrey  
 James Traglia  
 Lisa A. Trainor  
 Mary Trickey  
 Carol Lynn Trocki  
 Alden S. Tucker  
 Bob and Jennifer Vergnani  
 George and Phyllis Walker  
 Kelly and Lisa Walker  
 Jessica Walsh  
 Roger and Eileen Warburton  
 Mary Warhurst  
 Nancy and Jim Webb  
 Brien and Helen Welch  
 Scot and Lynda West  
 Glenn and Elizabeth Whisler  
 Robert and Julie White  
 Jeanne M. Whitehead  
 Erin Williams  
 Evamaria Williams  
 Shawen Williams and Andrew MacKeith  
 Jean Wilson and Andre Levesque  
 Larry Zevon  
 Richard and Julie Ziino

### **Tribute Gifts**

*In Memory of Griffin Ackerman*  
 Ralph Gizzi

*In Recognition of the Allott Family*

Charles Clarkson  
 William Corcoran  
 Lois Eberhard  
 Zia Eftekhar  
 Jonathan Gewirz  
 William Harvey  
 Tom Hockaday

Jane Kirkpatrick  
 Mark Marosits  
 Linda McGoldrick  
 Bettie Bearden Pardee  
 Dwight Sipprelle  
 Meg Steiner  
 Michael Zani

*In Honor of John Armor*  
 Jan D. Armor

*In Memory of Jean L. Babcock*  
 Anonymous

*In Memory of Elizabeth Bolles*  
 Anne Beaven-Bolles

*In Honor of Ann Boyer*  
 Mattison Boyer

*In Memory of Daniel P. Brenton*  
 Belgravia Imports  
 Ann Boyer  
 George Stecker

*In Memory of Christopher Cottle*  
 Marjorie Cottle

*In Memory of Anne Damon*  
 Lawrence and Elizabeth Allen  
 Peter Damon

*In Memory of Ronald Dick*  
 Lilly Dick

*In Memory of Thomas Ewens*  
 Anonymous  
 Belgian School for Psychoanalysis  
 (BSP-EBP)  
 Francis Burke  
 Robert Burkert  
 Thomas Briody  
 Sara Cowey  
 Frances G. Delasanta  
 Ewens Consulting  
 William Emmet  
 Mary Lou Findley  
 Jean Michel Le Bot  
 Kerri Lemoie  
 Ellen Leys  
 Amy Moses  
 Edward O'Neill  
 Nancy O'Neill  
 Quindecim  
 Suzanne Reid  
 Rhode Island Public Defender  
 Adrienne Shaw  
 Richard Silverman  
 Carol Hovey Stallman  
 William Tumber  
 Mary Warhurst

*In Memory of Lisa Feldt*  
Taylor T. Rock

*In Memory of Annette Freedman*  
Jennifer and Tony Klemmer  
Rabbi Loel and Patricia Weiss

*In Memory of Bill Freedman*  
Rabbi Marc Mandel

*In Memory of Sarah Gewirz*  
Richard and Fanchon Burnham  
Cleo and Michael Gewirz  
Rita and Jonathan Gewirz

*In Memory of June Gibbs*  
Anonymous

*In Honor of Barbara Ghazarian*  
Joyce Turcotte

*In Honor of Lisa Gurney-Henshaw*  
Peter Henshaw

*In Honor of Dorothy Henderson*  
Douglas Kohler

*In Memory of Paul Houston*  
Dolores Houston

*In Honor of Mark Hull*  
Lisa and George Francisco

*In Memory of Louis Lally*  
Robert and Alyson Novick

*In Honor of Gretchen Markert*  
Christine Ginsburg

*In Honor of Edward Maschler*  
Julie Maschler

*In Memory of June D. McGoldrick*  
Bettie Bearden Pardee

*In Memory of Tim Mills*  
Judith Byrnes  
Edith Fletcher and Robert Cornett  
Peter and Diane Janaros  
James and Catherine Maher  
Anne Mills  
Peter and Sandy Miniati  
Jessica Pohl  
Dennis Sullivan  
Hiltrud Walsh

*In Honor of Anita Montero*  
Francisco Montero

*In Honor of Anders S. Nielsen*  
Brittany Arbo  
Mary T. Jackson

*In Memory of Kevin O'Halloran*  
Steven and Linn Freedman

*In Honor of Tom Perkins*  
Paul and Joni Jablansky

*In Memory of Athena Petropoulos*  
Abigail Demopulos

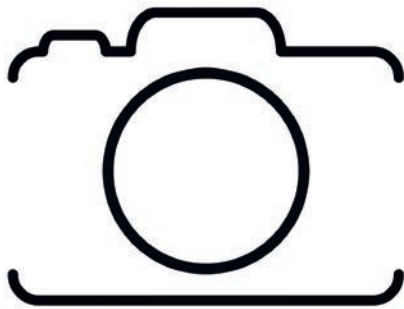
*In Memory of Mark Poremski*  
Stephen and Debbie Barth  
Tim Fraundorf and Frank Czerwony  
Mary Esteves  
Frederick Hussey and Jo Ann Faris  
Ann Gardella  
Dianne Grinnell  
Sharon V. Lynch  
Janet McCarthy  
Caroline McNamara  
Dennis and Diane McNamara  
Laura Poulin  
Anne Powderly  
Susan Schenck  
Don and Sue Stanhope  
Rian and Susan Wilkinson

*In Memory of Benjamin Sheekey*  
Adrienne Haylor

*In Memory of Alexander Simmons*  
John Armor

*In Honor of Patricia Terlisner*  
Justin Terlisner

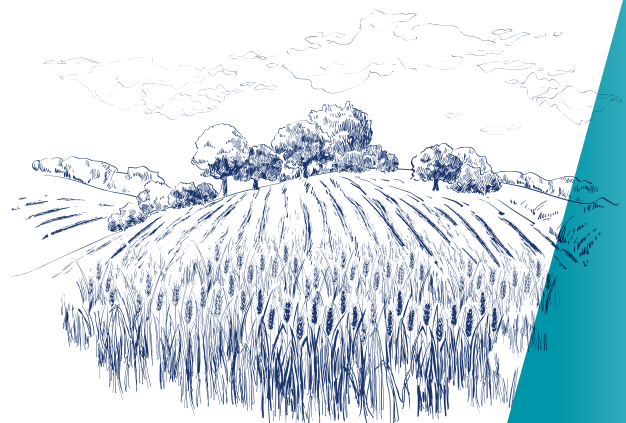
ALT makes every effort to ensure the accuracy of this list. Please accept our apology for any inaccuracies.



photography by  
**JESSICA POHL**

**The need to preserve  
our outdoor environment  
has never been greater.**

We are proud to support Aquidneck Land Trust  
in its mission to preserve the outdoors and strengthen  
our connections to the land and community.



**QMED** / The Power of Insight  
Innovations

Helping the community is always  
a smart investment. Rockland  
Trust is proud to support  
**Aquidneck Land Trust.**

Colleen Gouveia Moulton  
401.454.1718

[Colleen.GouveiaMoulton@Rocklandtrust.com](mailto:Colleen.GouveiaMoulton@Rocklandtrust.com)

William R. Mahoney, CFP®  
781.982.6523

[William.Mahoney@Rocklandtrust.com](mailto:William.Mahoney@Rocklandtrust.com)

**ROCKLAND**  
**TRUST**

BANK

Where Each Relationship Matters®

Member FDIC



F.L.PUTNAM

INVESTMENT MANAGEMENT COMPANY

**PROUD TO SUPPORT ALT  
AS A PRESENTING SPONSOR**

WELLESLEY, MA | PROVIDENCE, RI | WOLFEBORO, NH | PORTLAND, ME

[WWW.FLPUTNAM.COM](http://WWW.FLPUTNAM.COM)